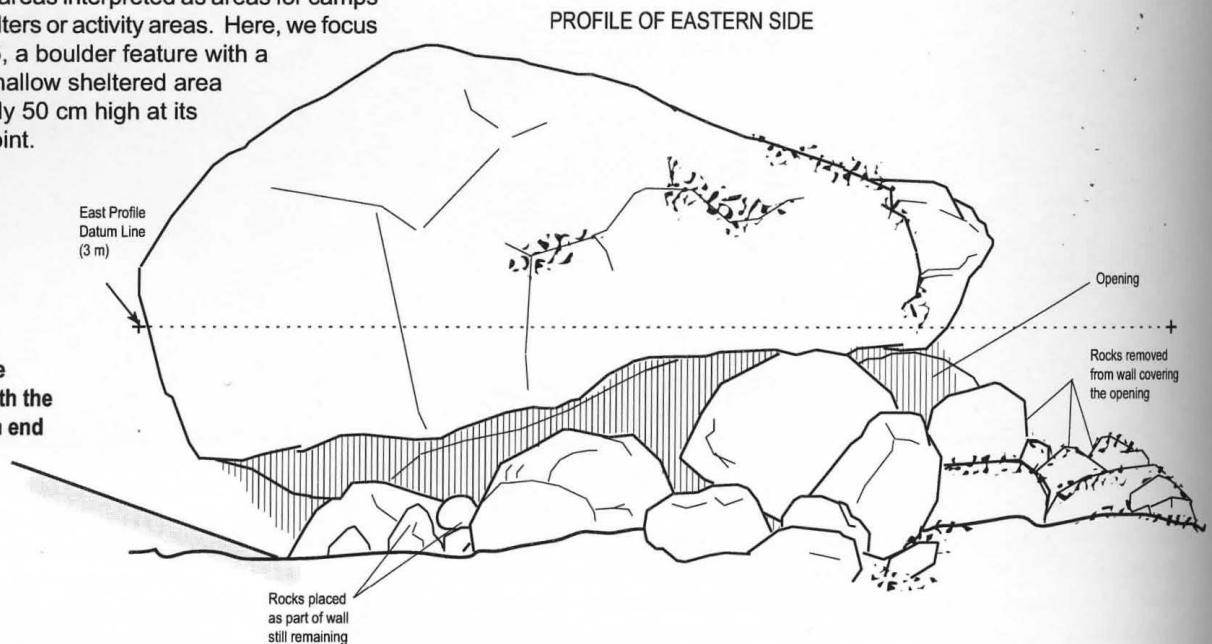


An Unusual Ground Slate Knife Recovered from a Boulder Feature near Kwoiek Creek

By Bill Angelbeck, Adrian Sanders, and David Hall

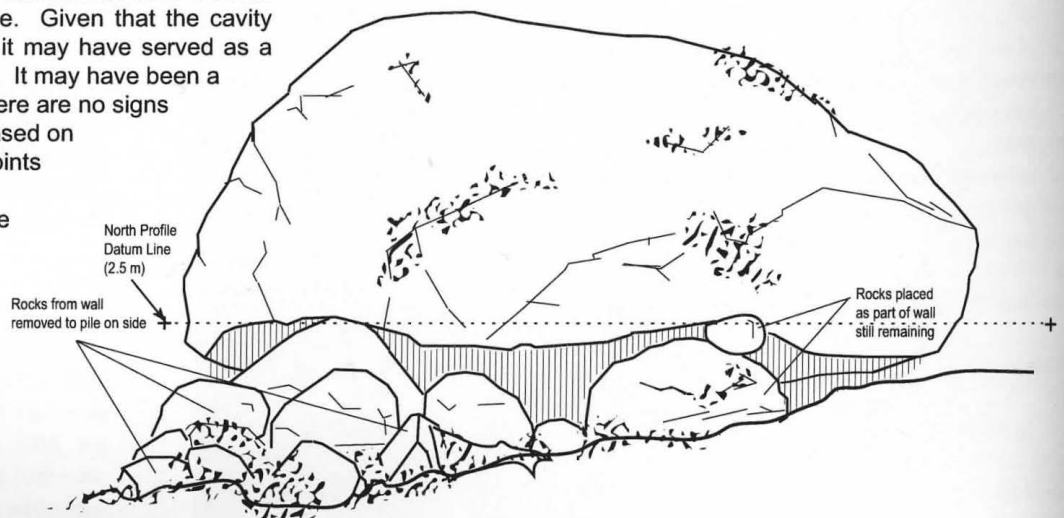
Site EaRj-83 is located near Kwoiek Creek's confluence with the Fraser River. The site contains numerous features, including roasting pits, cache pits, an isolated pithouse, and at least forty cleared areas interpreted as areas for camps with light shelters or activity areas. Here, we focus on Feature 5, a boulder feature with a broad and shallow sheltered area approximately 50 cm high at its maximum point.

Ground slate knife discovered beneath the shelter's southern end

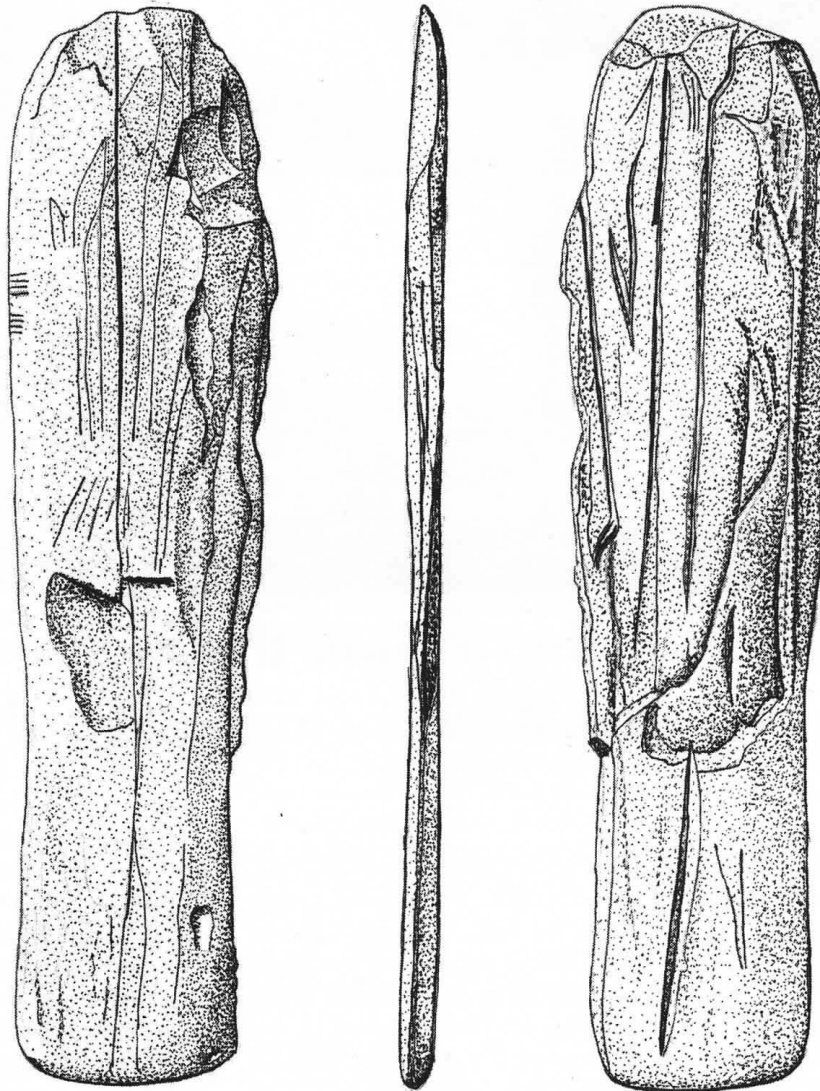


Openings are located along its northern and eastern sides. We suggest that these openings originally had been sealed with stacked rocks, but most of those rocks have long since been removed haphazardly to the side, likely by bears, or perhaps by the gold miners that have left their marks at a nearby site. Given that the cavity inside was protected, it may have served as a storage area or cache. It may have been a burial site, although there are no signs of bone remaining. Based on diagnostic projectile points recovered at the site, this feature dates to the Kamloops Horizon (1,200 to 200 BP)

PROFILE OF NORTHERN SIDE



At the southern end of the boulder feature, a ground slate knife was found (Art. No. TT 3-1). The artifact was unusual for having a shaped handle, rather than one side simply having an edge, as is typical for more expedient forms of such knives.



The knife was discovered by Frances Rodney Garcia of the Kanaka Bar Indian Band. Other crew members that worked on the site, besides the authors, included Timothy Spinks, also of Kanaka Bar Indian Band, and Ian Cameron.

The illustration was drawn by Don Welsh.

2.5 0 5 10 mm

Artifact	Description	L	W	Th	Blade Width	Handle Length	Handle Width	Material	Comment
TT 3-1	Formed ground slate knife	145	36	53	64	62	5	Slate	Shaped handle and blade, with some chipped scars and evidence of use.

All measurements in millimetres.

References

Angelbeck, Bill, Adrian Sanders, and David Hall
 2010 Archaeological Impact Assessment of Revisions to the Proposed Kwoiek Creek Hydroelectric Project near Lytton, B.C. Arrowstone Arrowstone Research and Consulting, Ltd. Prepared on Behalf of Kanaka Bar Indian Band and Kwoiek Creek Resources Limited Partnership. Permit 2008-0318. Archaeology Branch, Ministry of Small Business, Tourism & Culture, Victoria, B.C.