

PER

E78  
B9A68a



# MIDDEN

Publication of the Archaeological Society of British Columbia

ISSN 0047-7222

Vol. 37, No. 3 — 2005



## BC FIELD SCHOOLS IN SUMMER 2005

CARRUTHERS SITE ~ FRASER VALLEY ~ NORTHERN GULF

PLANTS OF HAIDA GWAI

PERMITS THROUGH 2004

SERIALS SERVICES  
**RECEIVED**

DEC 14 2005

UNIVERSITY OF VICTORIA  
McPHERSON LIBRARY



# THE MIDDEN

Published four times a year by the  
Archaeological Society of British Columbia

## Editorial Committee

- Editor:** Bill Angelbeck  
angelbec@interchange.ubc.ca
- Assistant Editor:** Patricia Ormerod  
pormerod@interchange.ubc.ca
- Permit Lists:** Richard Brolly  
rbrolly@arcas.net
- News Editor:** Sandy Grant  
anthropoid@telus.net
- Field Editor:** Rudy Reimer  
rudyreimer@telus.net
- Contributing Editor:** Rastko Cvekic  
rastko@shaw.ca  
Laura Koster  
laura@koster.net
- Subscriptions:** Sarah Baldry  
sbaldry@sfu.ca

SUBSCRIPTION is included with ASBC membership.  
Non-members: \$14.50 per year (\$17.00 USA and overseas), payable in Canadian funds to the ASBC. Remit to:

**Midden Subscriptions, ASBC**  
P.O. Box 520, Bentall Station  
Vancouver BC V6C 2N3

**SUBMISSIONS:** We welcome contributions on subjects germane to BC archaeology. Guidelines are available on page 31-32. Submissions should be directed to the appropriate editor by email or through the ASBC address.

**DEADLINE for UPCOMING SUBMISSIONS:** The deadline for submissions (news, letters, articles, crossword puzzles, etc.) for the next issues is November 30 (37.4) and January 31 (38.1).

## Copyright

Contents of *The Midden* are copyrighted by the ASBC, unless otherwise noted. It is unlawful to reproduce all or any part, by any means whatsoever, without the Society's permission, which is usually gladly given.

## ARCHAEOLOGICAL SOCIETY OF BRITISH COLUMBIA

Dedicated to the protection of archaeological resources  
and the spread of archaeological knowledge.

### President

Sarah Ladd (604.737.7935)  
president@asbc.bc.ca

### Membership

Jodie Anderson  
membership@asbc.bc.ca

Annual membership includes a year's subscription to  
*The Midden*.

### Membership Fees

Individual: \$25    Family: \$30    Seniors/Students: \$18  
Send cheque or money order payable to the ASBC to:

**ASBC Memberships**  
P.O. Box 520, Bentall Station  
Vancouver BC V6C 2N3

**ASBC on Internet**  
<http://asbc.bc.ca>

### Branches

**Nanaimo** Contact: [mail@asbcnanaimo.nisa.com](mailto:mail@asbcnanaimo.nisa.com). Membership inquiries: [membership@asbcnanaimo.nisa.com](mailto:membership@asbcnanaimo.nisa.com). Lectures on the second Friday of every month, 7:00 to 9:00 P.M. at Malaspina University-College, Education/Social Sciences Bldg. (356), Room 111.

Internet: [www.asbcnanaimo.nisa.com](http://www.asbcnanaimo.nisa.com)

**Victoria** Internet: [www.asbc.bc.ca/vicsite](http://www.asbc.bc.ca/vicsite)

ARCHAEOLOGICAL SOCIETY OF BRITISH COLUMBIA meetings in Vancouver featuring illustrated lectures are held on the second Wednesday of each month from September to June at 8:00 P.M. in the H.R. MacMillan Space Centre Auditorium (Planetarium) at 1100 Chestnut Street. New members and visitors are welcome. Admission is free.



# THE MIDDEN

Volume 37 No. 3, 2005

## In this issue

### News

The ASBC Page .....2

Update from the Nanaimo Branch .....3

*Julie Cowie*

Rare Inland Sites Threatened on Salt Spring Island .....5

*Hul'qumi'num Treaty Group*

In Memoriam: Arnold A. B. Feast.....6

*Simon Kaltenrieder*

### Features: Reports from BC Field Schools from Summer 2005

Langara Field School: Investigations at the Carruthers Site .....7

*Rastko Cvekic*

Mapping and Testing Housepits in the Fraser Valley.....9

*Kisha Supernant*

UBC Field School in the Northern Gulf Islands .....12

*Matt McGinity*

### Book Reviews

*Plants of Haida Gwaii*, by Nancy Turner.....15

*Reviewed by Natasha Lyons*

Permits .....17

Northwest Coast Archaeology: The Crossword .....30

*Composed by Sarah Ladd*

Guidelines for Contributors .....31

Events & Conferences..... Back Cover

### From the Editors:

We are catching up on the publication of permits, with many pages covering permits through the end of 2004. In the next issue, we plan on fully catching up with all permits from 2005. Also, for those interested in contributing to *The Midden*, we have begun to include deadlines for upcoming issues regularly in the masthead, and in this issue, our complete guidelines are provided on page 31. Enjoy the reports from three of this summer's field schools in southern BC.

### THE MIDDEN Subscriptions

Subscriptions to **THE MIDDEN** are included with ASBC memberships. For non-members in Canada subscriptions are available at \$14.50 per year—\$17.00 for addresses outside Canada.

Single copies of most previous issues are available at \$5.00 each. Subscription forms and membership application forms are available on our Web site.

### Cover

The Fraser Valley Field School on Place-Names Tour on the Fraser River. From left: Kisha Supernant, Kathleen Jessup, Sonny McHalsie (Stó:lo guide, driving), Chris Marchand, and Darren Jones (Photo by Marnie Recker; to see others by this photographer, see <http://www.marnierecker.com>).



# THE ASBC PAGE

## *Letter from the President*

Dear Readers,

I hope you have all enjoyed your summer, whether you were off on an archaeological dig, traveling, or exploring your own neighbourhood as I have been doing. The ASBC has had a busy summer and I'm pleased to let you all know about some of the things we've been cooking up for you.

In May of 2005 we found out we had been approved for Human Resources Skills Development Canada (HRSDC) Summer Career Placement funding in order to hire a student as a Project Assistant. We created a job description and posted it with SFU and UBC's Co-operative Education programs, and ultimately hired an SFU Communication Co-op student. David Sadler spent 13 weeks working for us, and during his time he accomplished many things. The most visible accomplishment is the new look and feel of our web site: <http://www.asbc.bc.ca>. I urge you all to check out the improvements and post messages in the discussion forum he has created for us to use.

Other projects David worked on this summer included the cataloguing and organizing of our library collection of journals, notes and books – formerly (and fondly) called “the Scary room.” This room is now far from scary and we have available a full list of all our holdings with the hope that you, our members and readers, will be able to make use of this resource.

Some of you met David this summer while he conducted interviews with the founding members of the ASBC. These interviews will be used in future volumes of *The Midden*, and will potentially be put into a booklet to celebrate the ASBC's 40th Anniversary year, which begins in January 2006. We also are in the planning stages of preparation for the 40th Anniversary celebrations. Some of the ideas we are looking at include a “week” of activities around one of our lectures, culminating in a barbeque. We appreciate any ideas you may have, or if you are willing to volunteer to assist us, please contact me at [president@asbc.bc.ca](mailto:president@asbc.bc.ca) or by phone at 604-737-7935.

One more special note: I wish to extend my gratitude and thanks to Nadine Gray, who was until recently an elected member of our Executive. Nadine has moved on to a teaching position in Kamloops, and while I wish her well, she will be missed for her cheerfulness and expertise. Thank you Nadine, and good luck!



Sarah Ladd  
President



## News from the Nanaimo Branch of the ASBC

Welcome to the Nanaimo Branch of the ASBC. The summer of 2005 began with our June Annual General Meeting, bringing in a new face and the exiting of valued partners. Nola Nahirnick joins us a treasurer and veteran Exec members Daphne Paterson and Imogene Lim take a hard-earned break for this term. Thanks to you both who have worked so hard in the past and know that your knowledge and guidance has made all the difference. Our Exec looks forward to a busy year!

Summer saw the continuation of the analysis phase of our *Hands On Heritage!* project, with a large amount of the work being completed by September. Thanks again to those who are working to complete this project. There is still analysis to do so there are ample volunteer opportunities on site. Contact Colleen Parsley (handsonheritage@asbcnanaimo.nisa.net) if you can volunteer your time. The HOH lab has flexible hours can accommodate those who want to volunteer.

The summer also saw the 4th installment of our "Discover Archaeology" Interactive Bones Display at the Nanaimo District Museum in August. This year's display focused on forensic archaeology, illustrated by various skeletal examples of such diseases as Osteoporosis and Osteoarthritis, as well as examples of breaks and infection. Most examples were non-human but we did have a few human casts and one real skeleton courtesy of Malaspina University. We also had a section on Archaeoparasitology, designed by our resident expert Nadine Simpson, which showed how the past could be illuminated by using insect remains. She also brought some real specimens and the maggots were a hit with the kids. Thanks to those who volunteered that day: Nadine Simpson, Daphne Paterson, Colleen and Jasper Parsley, Natalie Michaud, Cecilia Fuentes Hansen, and Charlene Riches. Your hard work was much appreciated. Despite a last minute appearance on the A Channel morning show for publicity and a lot of advertising, this year's display did not see many visitors, partly due to the fact that a good portion of the buildings surrounding the Museum were being demolished. Regardless, the event was a success in that it brought many institutions together under one roof, donating their specimens for educational purposes. I would like to thank Malaspina University College Anthropology Department (Imogene Lim, Gay Frederick, and Cheryl Roy), the University of Victoria Anthropology Department (Becky Wigen), Simon Fraser University Archaeology Laboratory (Heather Robertson), and the University of Calgary Archaeology Department (Brian Kooyman) for lending specimens for this display. In developing this display I learned a lot about forensics and never to hold another display during demolition. Stay tuned for the display next summer that will focus on Experimental Archaeology!

Summer of 2005 also found the Nanaimo ASBC busy on the local scene with the historic site of the Foundry being slated for demolition to make way for the new Nanaimo Convention Centre. In an age where heritage is constantly being overlooked or undervalued, it was felt by some of our members that it is the responsibility of citizens and local governments of British Columbia to preserve and protect our heritage landmarks. The Nanaimo Foundry building represents a rare physical link to Nanaimo's

industrial heritage, reminding us of Nanaimo's rich history and prosperous future. Thus letters were written in protest, e-mail discussion with the Mayor of Nanaimo ensued, and many of our members made their concerns known at various levels of government within Nanaimo. By adding our voices to those of other concerned groups in Nanaimo, it was decided by Nanaimo City Council that the oldest portion of the building be retained, demolishing the remainder, and discussions have begun on the possible future use of the building. ASBC Nanaimo will be watching in earnest as archaeological investigations are now underway at the site to ensure that any First Nations sites are not impacted by the construction.

ASBC Nanaimo also has also been busy writing letters regarding the awarding of the 2005 "Best Resort Development" Award to "Poets Cove Resort and Spa" by the Urban Development Institute - Pacific Region. You may remember Poets Cove Resort and Spa is currently being charged with violation of the British Columbia Heritage Conservation Act for damaging a First Nations burial site in building a resort on South Pender Island. The awarding of this title sends the message to other developers that First Nations' sites and heritage do not matter in the face development. First Nations sites, and archaeological sites in general, are fighting an increasingly uphill battle against development in this province. Developers, First Nations, local and provincial governments, and the archaeological community must work together in order to protect our past while planning our future. Unfortunately, the Urban Development Institute did not revoke the award, stating that they were conducting their own review and will await the courts' decision on the matter. One wonders if they will change their position once this goes to trial?

In a somewhat related matter, we also wrote a letter to Premier Campbell protesting the placement of the Archaeology Branch under the guise of the Ministry of Tourism, Sport, and the Arts. We felt it was inappropriate and illustrates lack of knowledge of the importance of our heritage resources as well as disrespect towards all British Columbians, past, present, and future. To place the protection of archaeological sites in the same ministry as resort and alpine ski developments demonstrates the unwillingness of this government to recognize the fundamental nature of archaeology and the important role it plays in protecting and enhancing our knowledge of the past. The archaeological record is fragile and in areas of dense population, especially along the South Coast where enormous ancient villages exist, the pressures to substitute this irreplaceable past with towers, housing and other developments is very high, yet not high profile, particularly in this Ministry. The current proposal not only fails to appreciate the irony of placing the management of archaeology with development but also illustrates a foreboding trend for the future. As funding to the Archaeology Branch has been drastically slashed and positions terminated, it is appalling that the protection and maintenance of 23,000 archaeological sites within the Province has been left to eight Branch staff members. It is not logical that an irreplaceable resource be mismanaged

## More News from the Nanaimo Branch

in such an alarming way. Other Branches have not been gutted in this manner, which illustrates that archaeology is not a priority on the government agenda.

We suggested that a review of the placement, structure, and staffing of the Archaeology Branch is warranted and that consideration be given to placing it within the Ministry of Aboriginal Relations and Reconciliation. With 99 percent of the recorded archaeological sites in the Province being of aboriginal origin, it is logical that management and administration of those sites be conducted within a Ministry that has a vested interest in heritage conservation. The current lack of policy regarding First Nations interests at the Archaeology Branch must be addressed. It is only fitting that the First Nations people of British Columbia finally become the acknowledged stewards in their role of conserving and managing their own history as they build towards their future. By placing the Archaeology Branch within the Ministry of Aboriginal Relations and Reconciliation, the government would illustrate their renewed commitment to aboriginal relations within this Province as stated in the Speech from the Throne on September 12, 2005.

To date, we have not received a response from our letter but we live in hope that the government will review its policies and make heritage a priority.

We are looking forward to the 2005-2006 year, which includes an upcoming Tri-Branch meeting with Vancouver, Victoria, and Nanaimo Executive members meeting in Nanaimo to discuss provincially related issues and ASBC business. We see this as an opportunity for the Executives to work together to plan the future of the ASBC, one that will see us working together to increase archaeological knowledge and heritage awareness in this province.

I am also happy to report that the Nanaimo Site Survey has been completed

and our consultant Nicole Oakes has submitted her final report. This project has taken a few years to complete and we thank all those that worked so hard. Much of the credit can be given to Dorothy Young who worked many years and pulled out many hairs over the course of this project. Thanks, Dorothy, because without you this would have never been completed. For those who are interested, copies of the report (excluding detailed maps with site information) are available for review. You can contact us by email ([mail@asbcnanaimo.nisa.com](mailto:mail@asbcnanaimo.nisa.com)) for further information.

We hope to see you all at the lectures and events planned for 2006!

Julie Cowie, Acting President  
ASBC Nanaimo Branch



### ACTIVATE!

The ASBC is seeking volunteers to help compose *The Midden*. First, we are considering applicants for an **Artistic Editor**, with interests in graphic design for composition and layout of our issues.

Second, we are seeking another **News Editor** to compose and solicit short news stories, and a **Publications Editor**, to handle book reviews.

Third, we would also like to attract **regional Contributing Editors** to provide and/or solicit news and articles from various regions and institutions in BC and the wider Northwest Coast and Interior.

If you are interested, please contact the editors: Bill Angelbeck ([angelbec@interchange.ubc.ca](mailto:angelbec@interchange.ubc.ca)) and Patricia Ormerod ([cbarc@interchange.ubc.ca](mailto:cbarc@interchange.ubc.ca)).

# ARCHAEOLOGY NEWS

## Rare Inland Sites Threatened on Salt Spring Island

A \$165-million new village development on Salt Spring Island is confirmed to have disturbed a series of rare, inland archaeological sites during construction last year. Highbridge Village is the largest urban development expansion in the history of the southern Gulf Islands. Significant planning work has been undertaken over the last 10 years to develop the outline for the new village, including rezoning arrangements under the Salt Spring Island Official Community Plan (1998). Unfortunately, heritage conservation was never meaningfully addressed in development plans.

In 2003, local Salt Spring Island residents contacted the Hul'qumi'num Treaty Group to report the presence of a

large, high-elevation inland shell midden, DfRv-110, and several unrecorded inland sites adjacent to Highbridge Village. Few inland sites have been recorded in the region and the nature of these rare sites is poorly understood. Preliminary evidence from the investigation of several Gulf Island sites indicate that the intensive settlement activity atop of these mountain landscapes appears to date around 2,000 years ago during the Marpole Phase (2500-1500/1000 BP).

Despite notification, the Channel Ridge Properties Ltd. developer proceeded to risk preparing the village site prior to their receipt of a development permit or an AIA study. In June 2004, HTG and Salt Spring Island residents soon instigated

an RCMP investigation against Channel Ridge Properties Ltd. for non-permitted impacts to the DfRv-110 site and two other unrecorded sites in contravention of the Heritage Conservation Act (1996).

Under the direction of the Archaeology Branch, Channel Ridge Properties Ltd. has recently completed a comprehensive inventory and impact assessment for Highbridge Village. This inventory has discovered a complex of archaeological sites atop of Channel Ridge, including several inland shell middens, lithic scatters, a hearth feature, and two previously unknown petroglyph rock art boulders.

The final report for the AIA study prepared on behalf of Channel Ridge Properties Ltd. has recommended that the petroglyphs boulders be removed out of the way of Highbridge Village developments in concern for their conservation. The Hul'qumi'num Elders have vehemently opposed this recommendation in respect of preserving the sanctity of their heritage at this ancient cultural landscape. In turn, HTG has requested that Channel Ridge begin to incorporate heritage conservation into their long-term development plans.

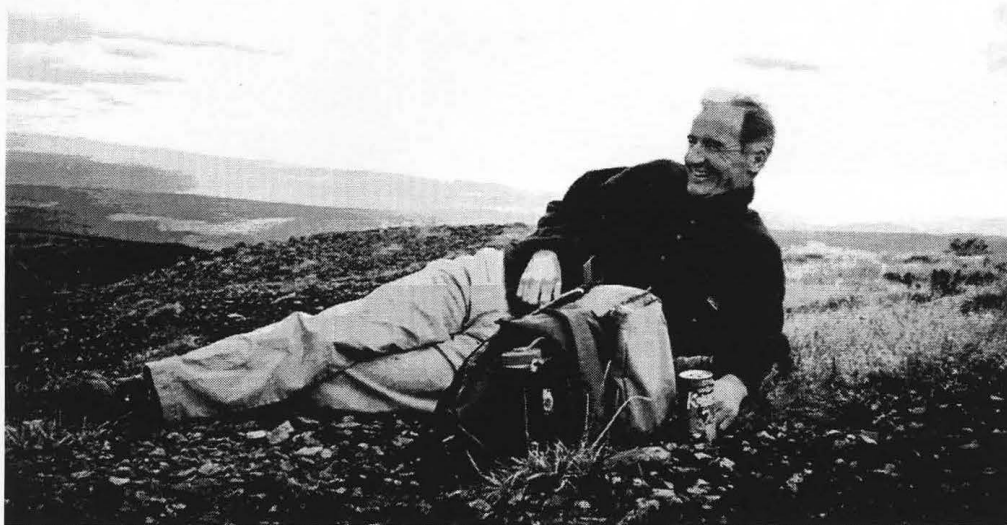
The RCMP investigation continues. Highbridge Village still awaits the issuance of a development permit.

### Hul'qumi'num Treaty Group



RCMP investigation of Highbridge Village development site with HTG, Archaeology Branch and Channel Ridge Properties Ltd. staff, June 17, 2004 (Photograph courtesy of HTG).





Arnie on Perkins' Peak, West Chilcotin, 1997 (Photo by Susan McNeney).

### In Memoriam Arnold A. B. Feast 1952 – 2005

It is with great sadness that we announce the passing of Arnold Feast, archaeologist and aviator.

He was the pilot of a single-engine Beaver float plane that went missing on February 28 on a flight from Campbell River to Bute Inlet. Despite a large-scale search effort involving the RCMP, the Coast Guard, the Royal Canadian Navy, and volunteers from Campbell River Search and Rescue, neither Feast nor his plane was found. In July, his plane was found, but neither Feast nor his passengers were located. They are officially presumed dead.

Arnie, as he was known to friends and colleagues, was born in Ontario in studied archaeology at McGill University in Montreal and at the College of William and Mary in Virginia. While he worked on a variety of prehistoric archaeological projects, Arnie was most passionate about Canadian historical archaeology. He spent many years working for Parks Canada in Cornwall, Ontario, a period he often reflected upon with great fondness. He enjoyed the scale of historic archaeology in central Canada, where he worked on projects involving massive architectural features such as forts. Arnie subsequently came to British Columbia where he was involved in a variety of cultural resource management studies. He juggled archaeology and flying jobs in BC, where he worked for Millennia Research Ltd., Antiquus Archaeological Consultants Ltd., and Norcan Consulting Ltd.

Despite his long-standing interest and professional involvement in Canadian archaeology, there can be no doubt that flying represented an even greater passion for Arnie. This is a passion he took from his father, who served on a torpedo bomber in the Royal Canadian Air Force during World War II. Many of us who worked with Arnie can recall instances where he was seen watching airplanes overhead instead of looking at the ground for artifacts and features! He was a superb field surveyor and an absolutely

incredible navigator—a skill no doubt honed as much through flying as through fieldwork. His field notes always began with the date, hour, temperature, precipitation, wind direction and speed, cloud cover and ceiling height. A true aviator at heart, even when on the ground.

Those of us who knew Arnie will remember his kindness and generosity. He was articulate and funny, honest and straightforward. He did not suffer fools gladly, but he was quietly self-effacing, and was a patient tutor to those he saw could benefit from his experiences. He was almost always grumbling and muttering, which was part of his charm. He was never afraid to admit his own shortcomings. He gave, and expected, respect. He made a real impact on our lives. We are so grateful and so sad.

Oh! I have slipped the surly bonds of Earth  
And danced the skies on laughter-silvered wings;  
Sunward I've climbed and joined the tumbling mirth of sun-split  
clouds—and done a hundred  
things  
You have not dreamed of wheeled and soared and swung  
High in the sunlit silence. Hov'ring there,  
I've chased the shouting wind along, and flung  
My eager craft through footless falls of air...  
Up, up the long, delirious, burning blue  
I've topped the wind-swept heights with easy grace  
Where never lark, nor e'er eagle flew—  
And, while with silent lifting mind I've trod  
The high, untrespassed sanctity of space,  
Put out my hand and touched the face of God.

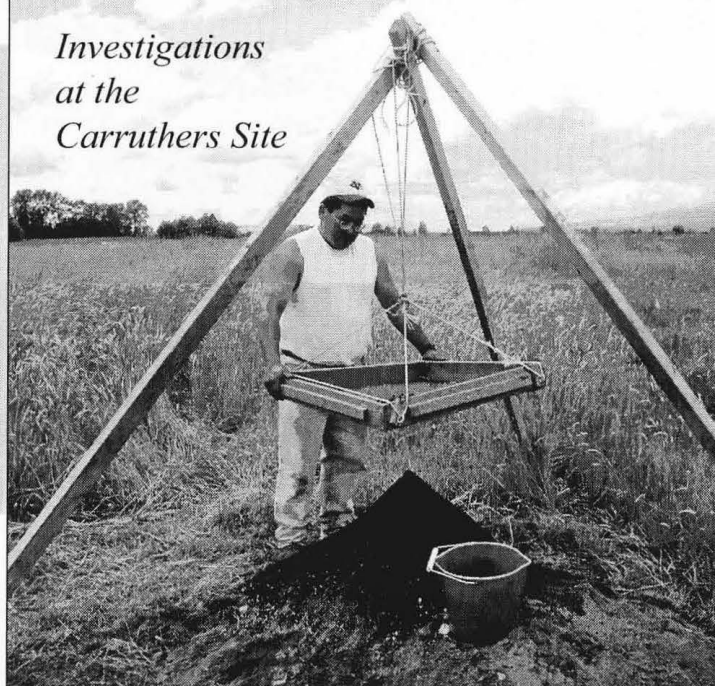
*High Flight (the Pilot's Creed)*, by John Gillespie Magee Jr.,  
Royal Canadian Air Force, 1941.

Simon Kaltenrieder



# Langara Field School

*Investigations  
at the  
Carruthers Site*



## Rastko Cvekic

Langara College teamed up with Katzie First Nation this year to offer their 15-credit archaeology field school in the Pitt Polder region. This area, bounded by Pitt Lake, the Pitt and Alouette rivers, and the highlands to the east, was a tidal marshland dissected by sloughs before late 19th century diking changed the landscape. Part of Katzie traditional territory, the "Polder" used to have abundant wapato patches, which were harvested annually in autumn. Today it is a rich agricultural land for different crops.

The field school crew, headed by Langara instructors Tanja Hoffmann and Stan Copp, spent the major part of the season excavating at the Carruthers site (DhRp-11), a provincially designated heritage site near the Alouette River in Pitt Meadows. Some time was also devoted to a reconnaissance survey of the area around DhRp-11 and further afield near Pitt Lake.

DhRp-11, the Carruthers site, has yielded pre-contact material of what the investigators consider to be very high significance, including a wet-site component with excellent organic preservation. After surface surveying and shovel testing in 2004, this year's investigation was conducted by excavation in natural layers of 2x2 meter units. This work was made necessary as part of an impact assessment for the landowner's plans to modify the land surface under which the site is located. All artifacts recovered this season are housed at the Katzie Administration Offices, where they are currently being catalogued and analysed.

The Carruthers site is situated near Sheridan Hill, which, according to oral history, used to be the highest mountain in the vicinity. It is from this mountain that Swaneset, from whom

many Katzie people are descended, had climbed to the sky, only to come back with a wife. Upon returning to earth, Swaneset reduced Sheridan Hill to its present size, in the process making the other hills that dot the "Polder" landscape to this day. He then led his people to settle down near the Fraser River, at what is today Katzie IR #1, where his sky wife released the eulachon into the world and taught her husband's people how to catch and prepare them. The Carruthers site is centrally located within this resource-rich landscape, and it is little wonder that exciting archaeological material should be coming to light from its vicinity.

DhRp-11 was originally excavated by David Crowe-Swords in 1973 as part of his research at Simon Fraser University. He interpreted the site as a seasonal camp with autumn occupation and dated it to around AD 800 on the basis of diagnostic artifacts. The artifact assemblage of close to 3,500 items was dominated by ground slate knife fragments, with sizable quantities of abrader fragments and chipped stone projectile points also present. The slate knives could have been used for preparing fish or wapato – a starchy tuber that resembles the Irish potato.

Topographically, the Carruthers site was laid out in a horse-shoe-shaped scatter of seven low mounds, spread over an area of 350 by 350 meters. These mounds were all leveled for agricultural activity, so one of the goals of this year's investigations was to determine where the mounds were located, in order to establish where Crowe-Swords had excavated three decades ago. Sadly, the old excavation units could not be located with certainty, because Crowe-Swords had only dug into the mounds, which are now obliterated, and not into the surface beneath them. The lesson

Photo: Crewmember Sid Johnson of Katzie keeps a watchful eye for cultural material at the screening station, Carruthers site (DhRp-11), June 30.

learned is that permanent site datum points must be established for future investigators to be able to coordinate their work with the results of previous excavation.

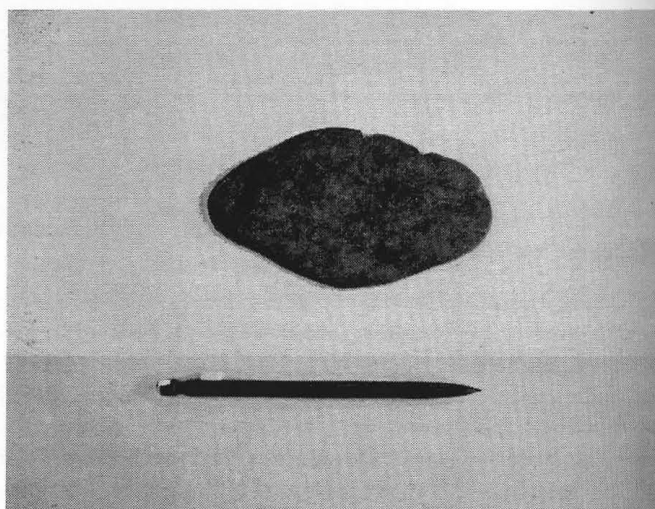
A second objective for this year's field school was to gain a better understanding of site use. This was necessitated by the fact that at least eight carved stone bowls, characteristic of high status during the Marpole period, had been found over the years in the vicinity of the site. These artifacts represent a large time-investment and are suggestive of high status activities and year-round occupation, which raises the possibility that the interpretation of the site as a seasonal camp, offered by Crowe-Swords, may not be complete. This year's excavations unearthed pieces of red ochre, a stone pipe, and a damaged stone bowl, adding further evidence to the argument for high status. Slate knives, adze blades, projectile points, and abraders were among the other lithic artifacts recovered, along with a wooden haft and a stake, preserved in peat. The most abundant material found, however, was exhausted fire-cracked rock. The activity that produced such large amounts of fire-cracked rock is still being debated, but ongoing analysis is likely to narrow down the possibilities. Other evidence for more permanent occupation at the Carruthers site is a patterned set of postholes, which may even be the remains of a permanent longhouse, but a larger area needs to be excavated to verify this interpretation.

Hoffmann and Copp had a third research goal in mind for the 2005 investigations at DhRp-11. A wet-site component pre-dating the main artifact-bearing layer at little less than a meter below the surface was sampled to determine whether it included cultural material. Indeed, from the single unit in which this layer was sampled, waterlogged organic artifacts have come out. Carved wooden implements and wood shavings indicate the presence of a woodworking industry at the wet-site component. The potential for organic preservation in the component is unique and warrants attention from the archaeological community. The waterlogged layer is protected by a clay seal, which could be destroyed by the proposed modifications to the site. Therefore, considering the high potential for investigating organic material culture, the investigators hope to be back at the Carruthers site in the near future. In the meantime, two charcoal samples have been sent for radiocarbon analysis to date the waterlogged material, and there are plans for getting a soil specialist involved in interpreting the complex stratigraphy of the lower levels. The question of how the waterlogged layer, which has also been identified at nearby localities, was formed, remains to be investigated.

These exciting archaeological discoveries were, in any case, only a part of what the students got out of the Langara field school experience. While learning about archaeological field techniques, laboratory methods, and geospatial analyses, part of the deal was also a course on ethnoarchaeology. This consisted of structured informant interviews, hands-on participation in traditional activities like bark stripping and salmon preparation, and morning discussions of how ethnographic information is pertinent to the understanding of the past behaviour that produced the archaeological record at the Carruthers site. Perhaps even more importantly, the field school allowed students to interact with Katzie crewmembers on a daily basis, which facilitated an ongoing cultural exchange. It is through these endeavours that lifelong friendships can form and collaborations for future archaeological research can arise.



Nearly complete nipple-top hand maul, recovered on June 22 from the Carruthers site (DhRp-11).



Complete ground slate knife, recovered on June 20 from the Carruthers site (DhRp-11).

As Katzie elders ceremonially opened and closed this season's excavations at DhRp-11, everyone involved in the Langara field school could appreciate the respect that the cultural heritage—of all of us—deserves.

#### **Acknowledgments:**

This report is based on a field visit to the Carruthers site and on informal telephone interviews with Stan Copp, Jamie Pierre, and Tanja Hoffmann. To Bill Angelbeck and Stan Copp for inviting me to write about the Langara field school; to Gary Sonik for accompanying me on the field visit; to the instructors, students, and crewmembers for making the visit enjoyable; and to the Katzie for sharing their cultural heritage: Thanks!





## Mapping and Testing Housepits in the Fraser Valley: 2005 UBC Field School Report

Kisha Supernant

On May 25, 2005, the UBC Fraser Valley Field School got underway. Our goal was to map and test a number of different village sites in the Upper Fraser River Valley and Lower Fraser River Canyon. This work is part of a larger joint collaborative project involving researchers from UBC, SFU, UCLA, University of Saskatchewan and the Stó:lo Nation / Stó:lo Tribal Council - the 'Fraser Valley Project'—incorporating archaeological, oral, historical, geological, and linguistic information to explore social identity among the Stó:lo. The nature of this collaborative project allowed the field school students to engage in different methods of archaeological data collection, including mapping and survey techniques, test excavation strategies and full-scale household excavations. While we were in the field, students from both the SFU field school and UCLA were working nearby, which gave the students an opportunity to experience different approaches to research.

The field school was directed by Dr. Michael Blake (Professor of Archaeology, UBC) and Dave Schaepe (PhD candidate, UBC; Senior Archaeologist, Stó:lo Nation), with technical support provided by Sue Formosa, a specialist in GPS survey and mapping techniques. Four UBC students, in addition to myself, participated in our field school. We joined with Dr. Dana Lepofsky's

SFU field school and started a rotating weekly schedule where two UBC students switched off working with SFU, while four SFU students worked with us. This was particularly useful for the students, as the SFU field school was excavating exclusively at the Katz site (DiRi-1)—with Dr. Lepofsky and Mike Lenert (PhD candidate, UCLA)—providing exposure to different sets of archaeological methods and strategies. Our students also had the opportunity to work with Anthony Graesch (PhD candidate, UCLA) who continued his excavations of a late-precontact / early post-contact village (*Welqamex*) on nearby Greenwood Island (part of the Chawathil First Nation's reserve lands). That site is located across from the Chawathil's Tel Teyet Campground in Hope, where we and the UCLA, and SFU fieldschools set up camp.

### Goals and Methods

In testing and mapping different sites throughout this portion of the Fraser Valley, our goals were to collect information applicable to understanding relationships between house size, house shape, and community organization. By sampling a number of house depressions at village sites throughout the region, we explored variation in house size, shape, and arrangement

Photograph: Excavations at Ayxel (DiRi-48). From left: Nick Waber, Dr. Michael Blake, Chris Marchand, Kisha Supernant, and Dave Schaepe (Photo by Marnie Recker).

within settlements. One of the goals of this project involved establishing dates for the houses at these village sites. Focused on this objective, we used methods that did the least amount of disturbance while providing information about stratigraphy and allowing for our collecting of datable materials. Our two main tools were an Oakfield Soil Probe with a 2.5 cm diameter x 25 cm core and an auger with a 13 cm diameter bore. We typically used the soil probe to assess stratigraphy, recording in detail each core profile; collecting carbon samples when possible. If the soil probe proved ineffective or the results warranted further exploration and exposure, we continued with the auger, or, if necessary, a 25 cm by 25 cm shovel test. Soil type does limit the utility of both the soil probe and auger, as neither is particularly effective in very rocky or very sandy conditions. All of the material was screened through 1/8 inch mesh, and artifacts were collected from the auger and shovel tests by arbitrary 10-cm levels within stratigraphic layers.

### The Sites

The first site we tested was *Ayxel* (DiRi-48), just outside of the township of Hope, which is currently a fishing location for a member of the local community. This site consists of four house-pits on a large terrace directly overlooking the Fraser River. The construction of the CN Railroad, which provides the only access to the site, has impacted DiRi-48. Using a total station in conjunction with a Leica base station and rover (in order to place sites in real space using UTM coordinates – often with 1 to 3 cm accuracy for site location and sub-centimetre accuracy for site mapping), we mapped all four house depressions. We also tested the features with the soil probe and auger, targeting locations just north of centre of each depression. This location consistently yielded what appeared to be hearth contents, marking house floors. We collected many samples for AMS radiocarbon dating.

One aspect of this fieldwork was our ability to bring information back from the field and get immediate results. We set up a lab in Hope (at the lovely Swiss Chalet, complete with flowery curtains) where we could download mapping information from the total station to the computer, and generate maps of the sites on which we were working. This was particularly useful because it allowed us to see where the gaps in our information might be, as well as bring out new features of the site. At DiRi-48, for example, we discovered several features present on the site that would not have been readily visible without the mapping technology. The next site we mapped, DhRi-15 (Scowlitz Island), located in the Harrison River on the Scowlitz First Nation reserve near Harrison Mills, also proved interesting once viewed using the mapping software. Our first task at this site was what we fondly referred to as “vegetative excavation” – basically, clearing the site of all of the tangled underbrush in order to see and map the various features. Once this was complete, we set to mapping five depressions as completely as we could, although we were limited by the fact that most of the depressions were partially filled with water. We assumed that these house-pits represented the remains of circular pit houses, but on the generated maps, some of these pit house remains were clearly square. This pattern of square house depressions that appear round to the naked eye continued at other sites, and became an ongoing debate during our work.

Our next site in the sample was near Chilliwack, on the

Soowahlie Reserve. *Th'ewali* (DgRi-17) is a large village site on Sweltzer Creek which includes both house-pit depressions and the remains of longhouses along with other features, including burial mounds and cairns. The site is largely intact, although a road built in the 1980s caused some disturbance to a number of the house depressions. After more vegetative excavation, we continued mapping of the site—picking up from what was previously done in 2002 and 2004—by filling in gaps and ensuring that we had a complete picture of the entire site. Through our testing, we quickly found that the rocky nature of the soil precluded soil probing. Because of the size of the site and the fact that we could not rely on the expedient soil probe, we were not able to test each house-pit feature, but instead focused on a few of features of particular interest. In the lower portion of the site, three features formed a linear pattern and were rectangular, not circular. One of the proposed scenarios for this formation was that these so-called house-pits were in fact cellars of one larger building, possibly a plank house. Another feature of specific importance at Soowahlie was a burial mound that had been partially cut through by road construction. Due to the sensitive nature of burial remains, we did not excavate further into the mound, but took measures to record the exposed stratigraphy and ensure that the mound was protected from further erosion.

Once we had completed our objectives at Soowahlie, we moved our operation further up the Fraser River to the site of *Xelhalh* (DjRi-14) at the mouth of the Fraser Canyon, on the *Xelhalh* Reserve of the Shxw'ow'hamel First Nation. *Xelhalh* (translated as “hurt” or “injured people” in Hal'qemeylem) is a large village site, located on the south side of the river opposite Lady Franklin Rock, and contains a number of remarkable features. Half of this site had been extensively cleared and partially mapped in 2004—the lower portion of the site consists of a number of cultural depressions, including house-pits, longhouse depressions and other assorted remains. It was first thought that this was the full extent of the site, but in further explorations last year, the team came across a number of constructed rock features on the other side of a rock bluff (the upper portion of the site) where the site extends to the east. These formations include numerous rock walls, constructed rock terraces, rock retaining walls for structural platforms, and what appear to be stone-lined rectangular house depressions. Our goals, therefore, were to finish mapping the lower portion of the site, test a number of cultural depressions, and begin mapping and testing the upper portion. In all, over 10,000 data points were taken by the end of mapping work. The soil probe proved quite effective at this site and we were able to test a large number of cultural depressions in a short time—only a few days. Mapping the features on the rock bluff, however, proved to be quite challenging. More work remains to be done and we hope to return to *Xelhalh* in the future.

Over the final two weeks of the field school, we tested and mapped two more sites. The first was Shxw'ow'hamel (DiRj-30), located on the Shxw'ow'hamel First Nation reserve between Hope and Chilliwack. This site was mapped in 2004, so our main goal was to test a sample of the house depressions at the site, evaluate the stratigraphic patterns, and see if it matched up with an account in Stó:lo oral history of a village that had burned down in the past. One interesting feature of this site, besides





Dr. Michael Blake in front of rock wall at *Xelháih* (Photo by author).

the swarms of mosquitoes, was the linear arrangement of the houses. They appear to cluster in groups of three or more. One of the aspects of the site that we were trying to understand was the relationship within and between these groups. We tested seven house-pits - at least one house depression in each of the clusters - with considerable success in identifying floor zones and collecting datable material. Further analysis is needed before we understand the spatial and temporal arrangement of the site.

The final site that we mapped and tested was not part of our original plan, but was added at the start of the field season. The John Mack Slough site (DhRI-T1) is located on the Chehalis First Nation reserve; it was undergoing a large scale clearing operation initiated by the Chehalis Nation. We used this opportunity to map the site using the total station and rover, as it is a largely intact and significant village site with a number of house depressions, burial mounds and other features. We auger tested a number of house-pits, but found that the water table was so high that we were only able to go down about 10-15 cm before we hit water. We were nevertheless able to profile and collect a carbon sample from one of our tests.

#### **Community Involvement**

A significant part of our work this summer was the involvement of the Stó:lo communities in our work. Since most of the sites we visited were located on reserve lands, it was first necessary to gain approval and permits through each First Nation Chief and Council, as facilitated by the Stó:lo Nation under the Stó:lo Heritage Policy. Moreover, at least one, and often more, Stó:lo community members (including Sonny McHalsie, Darren Jones, Tim Peters, Larry Commodore, Cliff Hall, and Betty Charlie) worked with us at each site. Their sharing of information and community-based perspectives on our work and

on the sites we visited made a very important contribution both to the goals of the project and to the learning experience of the field school students. As part of our lab work, we participated in an open house hosted by the Chawathil First Nation, since we were staying as guests on their reserve lands. The active role of the communities in informing and shaping the archaeological work is one of the reasons working in this area is so enjoyable, as we can ensure the needs of the community are met while engaging in our research. At the end of the season, a burning ceremony was held at Chawathil to honour the ancestors and ensure the spiritual health of all of those involved in the project.

The UBC field school in the Fraser Valley was, by all accounts, a great success. Not only were we able to map and sample a large number of house-pits in five different village sites spread throughout the region from Chilliwack to Yale, we were also able to expose the field school students to a variety of perspectives and methods used in archaeological research, both in the lab and in the field. Our experiences with members of the Stó:lo community were incredibly rewarding, and we had the chance to interact with other students and researchers from SFU and UCLA. It certainly made for a fun summer, and I hope to continue to work in this area with similar success.

---

**Kisha Supernant is a PhD student in the Department of Anthropology and Sociology at the University of British Columbia. Her interests include landscape archaeology, warfare, and the prehistory of the Fraser Valley.**

---



## UBC's Field School in the Northern Gulf Islands and Desolation Sound

**Matt McGinity**

We set out in early June of 2005 for Cortes Island not really knowing what to expect. Our goal was to investigate defensive sites in the northern Georgia Strait region. Our team was a total of eight in number; six students including myself, the instructor in charge of our fieldwork, Bill Angelbeck, and the teaching assistant, Meng Ying. Together we were one of UBC's four archaeology field schools that summer.

We all had been camping before, of course, though other than Bill and Meng we were all utterly inexperienced in archaeology outside the sterilized environment of the classroom. I personally had not been camping for several years, and even then my previous expeditions were merely week long excursions and incomparable to the intensity of a fieldschool experience. Cortes was definitely going to be new to me. Despite one or two minor setbacks along the road, we arrived on Cortes in decent time and immediately set up our "tarp-city" as a preemptive strike against the ever ominous clouds hanging above us.

The beauty of Cortes was immediately apparent. It is relatively isolated for a Gulf Island, especially if one is familiar with Salt Spring or Galiano. This is mainly due to the fact that one is required to take a total of three ferries and drive nearly the length

of Vancouver Island to reach Cortes from B.C.'s Lower Mainland. As such, much of the island appears largely untouched by modern, urbanized Canada, but of course this is largely an illusion. According to local testimony, the majority of the island was logged approximately eighty years ago and there is little old growth forest left on the main island of Cortes (some smaller surrounding islets have managed to avoid ever being logged). Fortunately however, a young forest consisting primarily of Douglas fir, cedar, hemlock, alder, and some arbutus has densely reclaimed much of the island. The island's faunal life also remains strong, which is a further indication of its healthy floral life. Deer were regularly seen, and we heard local accounts about a wolf, population on the island, with one frequently debated sighting by members of our own team (though it looked like a wolf some recall a collar on the animal, whereas others state there was no such thing). If indeed there are top-level predators such as wolves on Cortes, this would fully illustrate a thriving environment with an intact, complex food chain able to support relatively large predatory mammals.

The areas of Cortes that are developed are clustered rather than spread out, and our primary site of Smelt Bay was well re-

The crew explores a pictograph panel in Desolation Sound and returns to Klahoose I. From left: Erin Hannon, Meng Ying, Stephanie Watts, Matt McGinity, Bill Angelbeck, and Sean Aldcroft (Photograph by Marlowe Kennedy).



moved from such places. After setting up camp that first night, we took our first tour of the site at Smelt Bay.

Traditionally, a site of importance to the territory of the Sliammon and Klahoose First Nations, Smelt Bay is found on the south-west corner of Cortes. It is a colossal site, approximately 800 metres in length. To even the most casual observer, Smelt Bay's topography must seem unexpected, if not downright odd. The site area itself is a low, flat surface that rises only a few metres above sea level until further east, where it becomes a steep cliff up to the B.C. Parks campground (our home base—a mere 10 minute walk away from the site). Running the length of the low, undeveloped portion of Smelt Bay are three clear lines of raised earth running parallel to one another, which are transected by lesser, secondary perpendicular raised lines. Within these raised rectangles are depressions, some of which are actually lower than the natural ground level itself. These rows are most visible at the southern area of the site, which is an open grassy field clear of brush and trees. The northern end of the site has been landscaped and developed, and now a row of modern homes replaces the ancient undulating landscape that is still visible between properties. Some of the owners of these homes have accumulated impressive collections of artifacts, dug up from their archaeologically enriched gardens.

We were not the first to do work at Smelt Bay. In 1963 archaeologist Donald N. Abbott and his team concluded that the site consisted of "Shell midden with trench embankment(s)." In his view, Smelt Bay was a defensive site placed to protect those living upon higher ground: the cliffs (our campground), to the east of the site. He pictured the three rows of raised earth being the foundations for palisades, intermittent with deep trenches dug into the earth. Our field-school, however, resulted in a far different view on the nature of Smelt Bay. Abbott's theory fits within the cultural context for the area of course, as inter-tribal raids were relatively common throughout the Georgia Strait, as were extensive defense structures. In fact elsewhere on Cortes we visited two such defensive sites, but our investigations revealed that Smelt Bay was primarily a residential village.

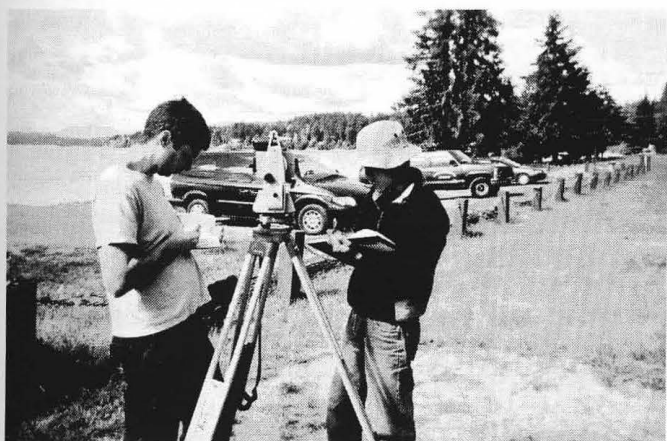
Our field-school used three approaches to gather our in-

formation: digital mapping, core sampling, and the traditional excavation of test units. I concentrated predominantly on the excavation of a 1-x-1 metre excavation on the northern portion of the site, which reached a final depth of approximately one hundred and twenty centimetres before hitting a basal horizon of sand. Others focused on bucket-auguring and core sampling, and the use of the total-station to produce a three-dimensional digital map. From the first day of work, we had two representatives from the Klahoose Nation, the First Nation whose reserve is found on Cortes, overseeing and working with us. Al Hanson and Mark Harry were assets, to say the least, as their local and cultural knowledge proved itself inexpressibly valuable time and time again. Furthermore, the added pairs of hands and eyes were helpful in that manner as well.

The inclusion of digital mapping proved to be a deciding factor that led us to our conclusion on the nature of Smelt Bay. It gave us the advantage of an interactive aerial view of the site, stripped of trees and bush. The map illuminated the series of lesser raised lines running perpendicular along an east-west axis to the three primary lines running north-south. If there were indeed alternating palisades and trenches here, as Abbott suggested, what would be the purpose of having easily crossable paths running across the dug-out trenches? What seemed far more likely was that we were, in fact, looking at a residential village, not defensive structures. The surface view provided by the digital imaging clearly illustrated rectangular depressions with raised middens around them, a hallmark of house structures in the region.

Excavations and core sampling too, called the "trench embankment" interpretation into question. For example, the walls of my 120-cm deep excavation into the side of one of the earthen embankments, clearly showed stratum of alternating midden and earth layers. Were the people at Smelt Bay to erect foundations for palisades, such work would likely be completed within one episode of earth movement, most likely using the refuse from the supposed trenches. However the excavations clearly showed highly stratified midden layers, typical of a long-term accumulation.

As I have already mentioned, houses at the site were not of uniform size or depth. In fact, one house depression was greater than any other by several metres in size but also depth. Found on the southern portion of the site, one explanation for this house relies on the writings of Homer Barnett (1944), who published a paper in 1944 discussing the occurrence of subterranean houses on the coast of British Columbia. Barnett describes what appear to be typical coastal plank houses except that these have either a removable false floor or a trapdoor covering an excavated subterranean room. Such space could be used for a variety of purposes such as storage of winter food or other items not used on a regular basis. If indeed a false floor within the confines of a house, the planks could also be removed during ceremonies to allow greater numbers of people access to that house, giving the family living there even greater prestige for hosting a greater number of people. Furthermore a removable false floor could be used to hide Elders, women, and children during raids, while the village warriors attempted to draw invading forces to prepared defensive areas. Barnett recorded spoken oral histories of both Sliammon and Klahoose, attesting to their relatively recent ancestors having such semi-subterranean dwellings (a date of 1820



Marlowe Kennedy and Meng Ying recording notes during a mapping session at Smelt Bay (Photo by Bill Angelbeck).



Inside Klahoose I heading deeper into Desolation Sound. From left: Amy Davidson, Sean Aldcroft, Al Hanson, and Ken Hanuse (Photo by Bill Angelbeck).

being suggested as the time of abandonment of these structures). Even more intriguing is testimony of such a house existing on the "west shores of the southern tip of Corte[s] Island" – exactly the location of Smelt Bay. The purpose of this house was described as "not only a shelter for a day but [to be] lived in over trouble periods", suggesting long term use (Barnett 1944:267).

We also took tribal Elders from the Klahoose and Sliammon communities on a tour of the site. All those who had worked on the site or who were visiting that day, formed a circle and with arms outstretched, received a brushing with cedar branches and the blessing prayers of the Elders one at a time. We then burnt a meal of offering to the spirits of Smelt Bay as a thank you. All in all, it was one of the most intensely spiritual days I have experienced.

We also carried out work at another site on Cortes Island and in Desolation Sound. In addition, Ken Hanuse, a Klahoose Elder, gave us a boat tour of Desolation Sound archaeological sites, including several pictograph panels.

Our month on Cortes was one that will not soon be forgotten by any of us there. Unfortunately I have only been able to outline the grossest of facts and experiences in this essay, and have had to leave many, many wonderful memories out. My deepest thanks go to the Klahoose and Sliammon, and the people of Cortes in

general for being so good to us. Much more than archaeological technique alone was learned there.

---

**Matt McGinity is a student in the Department of Anthropology and Sociology at the University of British Columbia.**

---



# BOOK REVIEWS

## *Plants of Haida Gwaii*

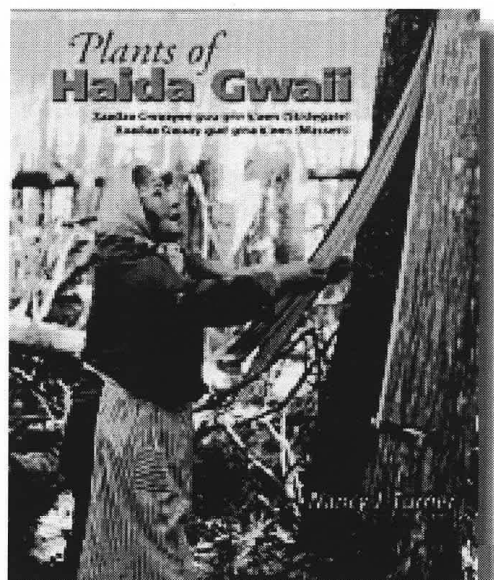
by Nancy Turner

Sono Nis Press, Winlaw, BC, 2004.

264 pp., illus., refs, index. Price: ISBN 1-55039-144-5, \$38.95 Cdn

Nancy Turner begins *Plants of Haida Gwaii* by acknowledging several Haida who made indispensable contributions to this book and by offering a Prayer for Haida Medicine written by Gwaaganad (Diane Brown). Turner's long and respectful association and collaboration with the Haida are apparent throughout the pages of this volume. The bulk of this work is drawn from her doctoral research at the University of British Columbia in the early 1970s, in addition to subsequent research by Turner and several linguists, and data collated from archival sources and ethnographies. This information is synthesized into a compelling narrative that demonstrates the importance of traditional plant knowledge, cross-cultural communication, and inter-disciplinary study in contemporary research. *Plants of Haida Gwaii* is engagingly written, clearly organized, beautifully illustrated with photos by Nancy and Robert Turner and artwork by Giitsxaa (Ron Wilson), and generally well-deserving of its Lieutenant-Governor of British Columbia's medal for Historical Writing.

The book is divided into a series of sections that thematically construct the relationship between Haida and the animate world. The preface and introduction acquaint the reader with the Haida and their lands and resources, but also suggest the nature of interaction between Turner and her Haida collaborators. Advisors from The Haida Watchmen Program, Massett and Skidegate Band Councils and Elders Groups provided guidance about the structure and content of the ethnobotanical information presented. Traditional plant knowledge of various Indigenous Peoples worldwide—and particularly pharmacological knowledge—has been used by outside institutions or entrepreneurs in ways that are ecologically irresponsible and disrespectful to their owners, such as the over-harvest of yew trees for the drug Taxol. Haida advisors to this research took great care in choosing what information to share with a broad audience, including scientists, aboriginal and non-aboriginal people, and the general public. Their omissions are noteworthy. For instance, knowledge regarding the medicinal and spiritual uses of plants is presented in a general sense, while specifics such as collection methods or recipes are withheld be-



cause they are “considered private knowledge” not suitable “for a book such as this” (p. 21). In her own consultations with Elders about plant medicines and spiritual uses, Turner considered all perspectives and took a conservative stance in what should be submitted for public consumption (Gold, pers. comm.).

The third and fourth sections of Turner's volume discuss the role of plants in Haida culture, working from general to specific. The third section describes plants used traditionally for foods, medicines, and technologies, in ceremonies and narratives. A classification of plants in the Haida language derived from Turner's dissertation is outlined, using an orthography developed by linguists and adapted to suit present-day Haida pedagogical needs. The fourth section, which comprises the main body of the book, is organized using this Haida plant taxonomy. It meticulously documents the cultural uses of 150 plant species, combining knowledge collected from and verified by Elders over the past 30 years by Turner and others, with information from ethnographic and historical sources such as Blackman, Newcombe, Swanton, and Boas. Unlike Turner's earlier ethnobotanical handbooks of Coastal First Peoples, the plant descriptions do not contain botanical characteristics, habitat, and distribution (which are available elsewhere, as well-referenced in the foregoing section) but instead focus on traditional knowledge such as aboriginal harvest, produc-

tion, cultural uses and related narratives. Traditional narratives are often highlighted in boxes alongside the text.

The utility of *Plants of Haida Gwaii* to archaeologists is manifold. The careful documentation of contemporary and historic plant use among the Haida provides a clear source for developing correlates that can be tested through palaeoethnobotanical, featural, household, artifactual, environmental, or other archaeological data. Palaeoethnobotanists especially have benefited from Turner's ethnobotanical publications—this being no exception—as a means to understand and interpret the growing body of archaeobotanical data being collected across British Columbia. Another substantive contribution of this volume to archaeology, as noted, concerns the collaboration described between Haida Nation and Nancy Turner. Turner does an admirable job of negotiating her position as friend, advocate, scientist and researcher to the Haida. Captain Gold, who served as an advisor to this book and has developed an Indigenous Red Cedar Archaeology on Haida Gwaii, recently suggested to me that “Nancy got it right from the start”; she has always held Haida Elders and their knowledge in highest regard and serves as a model for research in Haida territory (Gold, pers. comm.).

*Plants of Haida Gwaii* is an impressive compendium of traditional and modern plant knowledge with significant import for the study of the past. If I have any critique of this work, it is that I would have liked to hear more about the processes that attended the thirty years of (sometimes sporadic) collaboration represented here. Turner makes few comments in the pages of this book about methodology—how informants were selected and approached, how ethnobotanical investigations were conducted, or how negotiations surrounding approvals for the book from various Haida governing bodies were carried out. The preface and early sections of the book comment briefly on who was consulted and hint at the length and considerable shepherding of such work by various Haida political leaders, but a more reflexive account would be welcome. Turner's chosen position as an advocate and friend, as exemplified by the overall tone of the book, may have precluded further delving into such matters. These, however, are timely issues in social research, especially the anthropological disciplines, and much is to be learned about the patience, commitment, honesty, and humility gained by such long-term and successful collaborations between researchers and British Columbia's First Nations.

Turner's social conscience motivates the conclusions of *Plants of Haida Gwaii*. She comments on both the potential for her work to contribute to Haida land claims and other types of negotiations and on the political standpoint of the Haida. “In general, the Haida do not feel that the government, company officials, researchers or environmentalists are adequately voicing their concerns or considering their needs and desires in trying to make decisions related to the land” (p. 214). Part of the response to this lack of satisfaction with outside stakeholders was the development of the Haida Watchman Program in Gwaii Haanas National Park. Barbara Wilson, who has been closely connected with the launch of this program, emphasizes in the epilogue the continued importance of teaching outsiders about Haida culture, including the protection and conservation of the land, water, plants and animals. She says, “As with our language, stories, songs, names and lifestyle, the plants and their uses are very much a part

of what makes us who we are” (p. 217). These words, alongside this impressive body of work, demonstrate a keen awareness that ethnobotanical research exists in an evolving social milieu and has the power to positively influence the relationships between First Peoples, outside researchers, and respective levels of government.

### References Cited

- Gold, Captain.  
2005 Personal Communication. Conversation and email correspondence about *Plants of Haida Gwaii* and his involvement with Nancy Turner over the last several decades. May to August.

**Natasha Lyons**

**Natasha Lyons is currently doing her PhD at the University of Calgary. Her research is focused on developing a public archaeology program with the Inuvialuit community in the Western Arctic hamlet of Aklavik, NT. Additional research interests include palaeoethnobotany, Northwest Coast archaeology, social complexity, and current discourse on aboriginal issues in North America.**

### Answers to Crossword (page 30)

Clue	Word
Study of ancient humans	archaeology
Refuse, primarily shells	midden
Site of 2005 CAA's	malaspina
Culturally ____ tree	modified
Sacred tree	cedar
Mischievous bird	raven
Site in southern Vancouver	Marpole
Illustrator Hilary...	Stewart
Island Nation	Haida
Tall carving	totem pole
Face covering for dances	mask
Rock carving or egyptian marking for oil	petroglyph
Man-made item	artifact
Father of BC archaeology	Borden
Skillfully woven containers	basketry
Staple foodsource	salmon
Decimated First Nations, 1800's	smallpox
Reid, "Wild,"...	Bills
Fishing structures	weirs
Animal material, oft carved	antler

# PERMITS ISSUED BY ARCHAEOLOGY & REGISTRY SERVICE BRANCH IN 2004

Permitted project descriptions as provided by the Archaeology & Registry Services Branch have been edited for brevity and clarity. The assistance of Ray Kenny (Manager, Archaeological Planning & Assessment) and Al Mackie (Heritage Resource Specialist) in providing this information is gratefully acknowledged.

**Note:** Information about Permits is subject to restrictions imposed by Federal privacy regulations. For this reason, Site Alteration Permits issued to private landowners will not identify those Permit-holders by name, or provide exact addresses or legal descriptions for their properties. The federal privacy regulations do not apply to corporate developers, or archaeologists.

**Glossary of Abbreviations:** A number of recurrent abbreviations may not be familiar to many readers of *The Midden*, and the most common of these are explained here.

**Permit types:** ALT = Alteration; INS = Inspection; INV = Investigation.

**Archaeological project types:** AIA = Archaeological Impact Assessment; AIS = Archaeological Inventory Study; SDR = Systematic Data Recovery.

**Forest industry terms:** CMT = Culturally Modified Tree; CP = Cutting Permit; FD = Forest District, FL = Forest License; MoF = Ministry of Forests; SBFEP = Small Business Forest Enterprise Program; TFL = Tree Farm License; TL = Timber License; TSA = Timber Sales Area.

**Other government agencies:** FOC = Fisheries and Oceans Canada; DIAND = Department of Indian Affairs and Northern Development; LWBC = Land and Water B.C., Inc.; MEM = Ministry of Energy and Mines; MoT = Ministry of Transportation.

**First Nations abbreviations:** ATT = asserted traditional territory; FN = First Nation.

**Legal title descriptions:** DL = District Lot; P/L = pipeline; Rge = Range; R/W = right-of-way; Sec = Section, Tp = Township; T/L = transmission line.

**Other abbreviations:** Arch. = Archaeological; Inv. = Inventory; Prov. = Provincial; Dev. = Developments; Rd = Road

Permit	Type	Applicant	Description
2004-161	INV	Tanja Hoffmann	Arch. Investigations at the "Pitt Meadows" or "Carruthers" arch. site (designated Prov. heritage site, DhRp-011), and other arch. sites located on Golden Eagles Farm blueberry operations (Aquilini Investment Group) located E. of the confluence of the N. and S. Alouette Rivers, W. of Neaves Rd, Pitt Meadows.
2004-162	INV	Denis St. Claire	Research Investigations at arch. site DfSh-7 (former village of Huu7ii) on Diana Island, Barkley Sound.
2004-163	ALT	Cyril Thacker	Cutting, felling, yarding, moving, milling and other alterations by Houston Forests Products of CMT from arch. site FISr-004, located in CP 036-02, FLA16827, on the E. side of the Nadina River, 7 km SW of Jewell Lake, in the Nadina (Morice) FD.
2004-164	INS	Andrew Mason	AIA of the N. Fraser Perimeter Rd Project proposed by the MoT for the N. bank of the Fraser River from Mary Hill Bypass at Shaughnessy Street E. across a new fixed Pitt River bridge to TransLink's proposed new Fraser River Crossing at appx. 200th Street and Lougheed Highway in Maple Ridge.
2004-165	INS	Bruce Ball	AIA of forestry dev. proposed by MoFs Timber Sales, in the Central Cariboo and the Chilcotin FDs.
2004-166	INS	Joel Kinzie	Pre- and post-construction AIAs of proposed and existing oil and gas dev. by Petro-Canada Oil and Gas Ltd., and possible other proponents, within the Vanderhoof, Mackenzie, Fort St. James and Prince George FDs.
2004-167	INS	Morley Eldridge	AIA of forestry operations proposed by Western Forest Products Ltd in Blocks B1H, B2H, B3H, B4H, 237 A, 502B, 601, 601A, 601B within TFL 25 Block 6 and Block 904 within T0054, all located on Moresby Island near Botany Inlet and Sewell Inlet, and block 406 located on Wilson Bay, Haida Gwaii in the Queen Charlotte Islands FD.
2004-168	INS	Richard Brolly	AIAs for forestry dev. and forest health activities that may be proposed in the Kamloops FD by W. Fraser Mills Ltd., and possible other forest licencees.
2004-169	ALT	Mikel Leclerc	Removal of CMT #1 and #3 from culturally modified tree site FcTa-24, and alterations to land and unmodified trees within culturally modified tree site FcTa-23, resulting from construction of the proposed Yeo Mainline haul road, and from proposed timber harvesting in block Y-13 on Yeo Island, Mid-Coast FD
2004-170	INS	Margaret Rogers	Arch. inv./impact assessment for a proposed subdivision of property within Lot 3, Plan VIP63647, DL 29, Nanoose District, located near Parksville on the E. side of Lee Rd, in the vicinity of arch. site DiSc 27.
2004-171	INS	Peter Merchant	AIA of IL Marine Resort Inc.'s proposed condominium development of portions of a 1.25 acre (approx.) parcel of land located at Irvines Landing, on the N. shore of Pender Harbour, Sunshine Coast, Southwestern.
2004-172	INV	Ty Heffner	SDR from arch. site FfRs 55, prior to the MoT's proposed realignment, and ancillary dev., of a portion of Nazko Rd #59 in the vicinity of "Dunn's Corner", located approximately 46 km W. of Quesnel near DL 9513 and within the Cariboo Highway District



2004-173	INS	Dan Weinberger	AIA of forestry dev. proposed by Gorman Brothers Lumber Ltd., and possible other licensees, operating within Okanagan Shuswap FD.
2004-174	INS	Bruce Ball	AIA of forestry dev. proposed by Weldwood of Canada for the Central Cariboo and 100 Mile House FDs.
2004-175	INS	Heather Pratt	Arch. inv. for Norske Canada within DL 450, located immediately N. of Powell River and S. of Sliammon IR # 1 within Powell River District Municipality and in the vicinity of arch. sites DISd 1, 2 and 16.
2004-176	INV	Dan Smith	Research Investigations of CMT in the general areas of Brooks Bay and Lower E. Creek, NW Vancouver Island.
2004-177	ALT	Doug Grimes	Alterations to arch. site EeRj-99, EeRj-101, EeRj-215 and EeRj-221 during Hydro's reclamation activities associated with removal of utility poles that were used during exploratory coal mine workings in the Upper Hat Creek Valley.
2004-178	INV	Paul Prince	Arch. evaluative test excavations at sites GiTa-010, GiTa-019, GiTa-023, and GiTa-027, located on Kitwanga Lake, N. of the village of Kitwanga, Kitwanga River Valley.
2004-179	INS	Hugh Middleton	Arch. inv. for Land and Water British Columbia of a 19.8 ha parcel of unsurveyed Crown Land in the vicinity of DL 545A, Rge 3, Coast District, located on the N. side of Nimpo Lake in the Chilcotin region of W. central.
2004-180	INS	Andrew Mason	AIA of International Forest Products Ltd.'s proposed forestry operations within parts of the Chilliwack FD.
2004-181	ALT	R. Shafer	Alterations to culturally modified tree sites DfSh-203 and DfSh-204, DgSh-026 through DgSh-034, DgSh-036, and DgSh-038 through DgSh-058 from proposed logging operations managed by Echa-Peh Forest Resources Ltd. under FL A71504, located on the S. side of Pipestem Inlet, Barkley Sound, S. Island FD.
2004-182	INS	Hartley Odwak	AIA of forestry dev. proposed by the MoFs through Timber Sales, Seaward/Tlastala Business Unit, spanning Northern Vancouver Island, Queen Charlotte Strait, Goletas Channel, Johnstone Strait, and adjacent mainland, N. Island-Central Coast FD.
2004-183	INS	Bonnie Campbell	AIA of proposed forestry dev. by W. Fraser Mills Ltd. (Chasm Sawmills Division), and possible other licensees or agents, operating within the Kamloops FD.
2004-184	INS	Matthew Begg	AIA of twenty six forestry dev. proposed by Marble Canyon Forestry pm the N. slope of Mount Cole near Pavilion Lake, within the Lillooet Timber Supply Area of the Cascades FD.
2004-185	INS	Matthew Begg	AIA of the MoT's proposed upgrades to creek crossings along Highway 37S between Cablecar Creek and Powerline Creek, including associated temporary works such as traffic diversions, located between 4.4 and 7.1 km N. of Kitimat and the Robinson Lake Gravel Pit located about 2km SE of the interSec of Highway 37S and Kitimaat Village Rd.
2004-186	ALT	Spencer Siwallace	Alterations to culturally modified tree site DgSj-059 from proposed logging operations by Iisaak Forest Resources Ltd. in cut block 12.23.51 (Berryman), TFL 57, located near to Berryman and Kennedy Coves, Tofino Inlet, Clayoquot Sound, S. Island FD.
2004-187	INS	Dan Weinberger	AIA of the proposed Mkw'alts (Ure) Creek Hydroelectric Project for Cloudworks Energy Incorporated, consisting of the construction of a penstock, power house and intake system on the S. side of Lillooet Lake at the mouth of Ure Creek, and a sub-station on the opposite N. side, and possible ancillary dev., including those relating to the installation of a submarine cable across the lake. Study area amended to included the proposed penstock R/W commencing at the proposed powerhouse facility on Mkw'alts Creek, up stream for approximately 5 km to the intake point.
2004-188	ALT	Domenico Iannidinardo	Removal, by standing stem aerial selection harvesting, of non-CMT located from within the boundaries of arch. site DkSo-37 as a result of Western Forest Products Limited's forestry operations within TFI 19, Block H39, located to the E. of Galiano Bay on Tlupana Inlet within the Campbell River FD.
2004-189	INS	Ian Franck	AIA of forestry activities in Cut Blocks A20471-11A and A20471-47 proposed by Dorman Timber Ltd. near Lake Errock and Norrish Creek respectively, Chilliwack FD.
2004-190	INS	Jeff Bailey	AIA for proposed development of a residential subdivision in Sec 33, Tp. 14, Lots 7 to 9, O.D.Y.D., PPlan 2018, located on the NE shore of Okanagan Lake, 12 km S. of Vernon and immediately S. of Ellison Prov. Park, in the vicinity of arch. sites EbQu 9, 10 and 42
2004-191	INS	Dan Weinberger	AIA of forestry dev. that may be proposed by Riverside Forest Products Ltd., and possibly other proponents, all within the Chilcotin FD.
2004-192	INS	Morley Eldridge	Arch. inv. and impact assessment of Polaris Mineral Corporation's proposed Orca Sand and Gravel operations located beside the Cluxewe River and Highway 19 and including ship loading facilities in Broughton Strait, all W. of Port McNeill.
2004-193	INS	Tanja Hoffmann	AIA of Cut Block 3 proposed within the University of British Columbia Malcolm Knapp Research Forest Woodlot W0037, near Goose Lake, Chilliwack FD.
2004-194	INS	Amanda Marshall	AIA of proposed forestry operations by private land owners Don and Mark Halvorsen within Lots 4772 and 865A, Rge 5, Coast Land District, located immediately W. of the Skeena River between Quill and Lorne Creeks, in the Skeena Stikine FD.



2004-195	INS	Beth Hrychuk	Pre- and post-development AIAs for Duke Energy Gas Transmission's proposed and existing oil and gas dev. located in areas of Northeastern covered by NTS mapsheets 93-I/ 1, 2, 7, 8, and 9 to 16; 93-J/16 and; 93-P/ 1 to 16; and portions of: 93-O/ 1, 7, 8, 9, 10, 15 and 16; 94-A/ 1, 2, 3, and 4; and 94-B/ 1 and 2, located S. of the Peace River.
2004-196	INS	Barry Wood	AIA of the site of a proposed vehicle inspection station located adjacent to the Trans Canada Highway near Donald, NW of Golden, District of W. Kootenay.
2004-197	INS	David Schaepe	AIA of forestry activities in FL A19202, Amendment 24/24A proposed by Cattermole Timber and Major Amendment 192 proposed by Timber Sales all located in the Chilliwack River Valley, Chilliwack FD.
2004-198	INS	Bjorn Simonsen	AIA for the proposed Red Chris Copper-Gold Mine Project, located on the Todagin Plateau S. and SW of Ealue Lake, near Iskut.
2004-199	INS	Karen Brady	AIA of proposed forestry dev. by Riverside Forest Products Ltd, Lignum Ltd, Tsi Del Del Enterprises Ltd, and possible other proponents not yet identified, within the Chilcotin FD
2004-200	ALT	Carl Miller	Alteration of site DISh-008 with the drilling of two 150 mm diameter geotechnical boreholes located at 2658 S. Island Highway, near Willow Creek, Campbell River.
2004-201	INS	Normand Canuel	AIA of proposed dev. within the Fort George District by the MoT (Northern Region)
2004-202	INS	Shane Bond	AIA for a proposed condominium development within Lot A, DL 36, Newcastle District, Plan VIP 54987, located near Bowser in the vicinity of DiSd 16.
2004-203	INS	Margaret Rogers	AIA for a proposed subdivision of property within Lot 2, Plan 2940, DL 11, Newcastle District, bounded by Cortes Rd, the Old Island Highway and Little Qualicum River, near to arch. sites DiSc-005 and DiSc-031.
2004-204	ALT	private property owner	Possible minor disturbance to DgRw-004 from proposed construction of stone rip-rap retaining wall along the foreshore on Gabriola Island on El Verano Drive.
2004-205	INS	Dan Weinberger	AIA of a MoT proposed culvert replacement and realignment of a Sec of Clearwater Valley Rd at Second Canyon Creek, located N. of the community of Clearwater.
2004-206	INS	Ian Wilson	AIA of proposed forestry dev. on behalf of the Nisga'a Lisims Government within Nisga'a Lands as defined in the Nisga'a Final Agreement, Kalum FD.
2004-207	INS	Duncan McLaren	Arch. inv. and impact assessment of proposed facilities associated with development of Uncona River Joint Venture's Small Hydroelectric project on the lower 5km of the Uncona River to its confluence with the Gold River, located on the W. coast of Vancouver Island.
2004-208	INS	Normand Canuel	AIA of Pacific Northern Gas Ltd.'s proposed P/L crossing of the Salmon River located approximately 35 km NW of Prince George.
2004-209	INS	Matthew Begg	AIAs, as requested by the Office of the Wet'suwet'en, of proposed forestry dev. by Pacific Inland resources, and possible other licensees within the Skeena Stikine FD.
2004-210	INS	Ian Wilson	AIA of proposed subdivision and related ancillary dev. of properties located at the interSec of Lagoon Rd and Aloha Avenue and extending in part to Anchorage Avenue all near Esquimalt Lagoon in the City of Colwood.
2004-211	INS	Duncan McLaren	Research inv. of arch. sites possibly located within the Kwalate Creek and Kwalate Point localities on the W. side of Knight Inlet, as part of a University of Victoria tsunami research project relating to landslide events on the E. side of the inlet N. of Adeane Point.
2004-212	ALT	Jack Reynolds	Alterations to culturally modified tree sites DISq-19, DISq-20, DISq-21, DISq-22, DISq-25 and DISq-26 from proposed logging operations by Western Forest Products Ltd. in Block E1 and Block E2 and associated roads, located near Hecate Lake on the N. end of Nootka Island, Campbell River FD.
2004-213	INS	Chris Engisch	AIS on behalf of the Hamatla Treaty Society of portions of Weyerhaeuser Company Ltd.'s TFL 39, Block 2, located on central-Eastern Vancouver Island within the Campbell River FD, between Campbell River and Port McNeill.
2004-214	INS	Kevin Robinson	Arch. survey and inspection involving remote sensing, surface inspection and limited subsurface testing of the seabed at the location of a recently recovered British "long shank" pattern iron anchor in Templar Channel off Tofino, Clayoquot Sound.
2004-215	INS	Casey O'Neill	Arch. inv./impact assessment for Western Canadian Coal Corporation of proposed Dillon Small Mine Project, located on WCCC's Burnt River Property N. of the confluence of Burnt River and Brazion Creek, S. of Chetwynd.
2004-216	INS	Casey O'Neill	Arch. inv./impact assessment for Western Canadian Coal Corporation of proposed Brule Mine Project, located on WCCC's Burnt River Property N. of the confluence of Burnt River and Brazion Creek, S. of Chetwynd.
2004-217	INS	Normand Canuel	Pre- and post-construction AIA of proposed and existing oil and gas dev. for Dominion Explorations Ltd and possible other proponents within the Peace Region of NE British Columbia.
2004-218	ALT	private property owner	Alterations to arch. site FbRo-11 during maintenance and improvement of ditching associated with the Knox Lake Spillway located between Knox Lake and Dexter Lake, Central Cariboo FD.
2004-219	INS	Richard Brolly	AIA of forestry dev. proposed by Pope & Talbot Ltd., and possible other licensees, operating within the Arrow Timber Supply Area and Tree Farm Licence 23, Arrow Boundary FD.

2004-220	INS	Amanda Marshall	AIA of proposed and existing oil and gas dev. by BG Canada Exploration and Production Inc., and possible other clients to be identified, operating within NTS map sheets 94 H and 94 I, Peace River region, NE British Columbia.
2004-221	INS	Robbin Chatan	AIA of Stolt Sea Farm Inc.'s proposed commercial fresh water fin fish farm in Lake Victoria and adjacent upland portion of Lot 185, TFL 6, Rupert Land District, located appx. 11 km SE of Port Alice on Northern Vancouver Island.
2004-222	INS	Barry Wood	SDR of the Henretta Creek Site EbPq-002 located within the Elk Valley Coal Corporation's proposed Turnbull Spoil Pile Expansion of the Fording River Operation, on DL 6644, SE British Columbia.
2004-223	ALT	private property owner	Alterations to a portion of arch. site DgRs-007 which may result from residential construction development and excavations on Beach Grove Rd in the Tsawwassen area of Delta.
2004-224	ALT	Ron Kadowaki	Alterations to arch. site DiSe-007 with the dismantling of a decommissioned septic field located alongside the Department of Fisheries and Oceans' parking lot at Deep Bay, and the reburial on site of all known human remains recovered from DiSe-007, E. coast Vancouver Island.
2004-225	ALT	private property owner	Alterations to DjSa-059 with the construction of a 30-unit condominium complex on a 0.5 hectare parcel at Irvine's Landing, Pender Harbour, Sunshine Coast.
2004-226	INS	Jim Stafford	AIA of a proposed upgrade to an existing automated weather station by Environment Canada, Meteorological Service of Canada, and located in Naikoon Park, at the tip of Rose Spit, Northeastern Graham Island, Queen Charlotte Islands.
2004-227	INS	Joel Kinzie	AIA of forestry dev. proposed by Forest Floor Contracting Ltd, and possible other licensees, operating within the Fort Nelson FD, except those portions that occur on NTS mapsheets 104 I and 104 P.
2004-228	INS	Bruce Ball	AIA of forestry dev. proposed by W. Fraser Mills Ltd. in the Central Cariboo FD, Chilcotin FD and Quesnel FD.
2004-229	INV	Bjorn Simonsen	SDR, including systematic surface collection and, if indicated, controlled arch. excavations, at arch. site EbRc-033 and EbRc-034 (formerly "EdRc T3"), situated within the impact zone of Quilchena Cattle Company Ltd.'s residential subdivision development at Lots 36 through 38 and Lots 39 through 44 at the "Quilchena Ranch" resort, located on the S. and E. side of Nicola Lake in the Upper Nicola Valley area of the Southern Interior Plateau.
2004-230	INS	Peter Merchant	Arch. inv. of appx. 16 km of coastline surrounding the communities of Madeira Park and Irvine's Landing, and the islands of Pearson, Martin, Charles, Calder, Mary and Dusenberry, located within Pender Harbour, Sunshine Coast.
2004-231	INS	David Hall	AIA of the Thunderbird residential housing development proposed for DLs 510 and 511, located N. of the community of Squamish.
2004-232	INS	Beth Hrychuk	AIA of road development projects proposed by the MoT in portions of map sheets 93 O, 93 P, 94 A, 94 B, 94 H, 94 G, 94 I, 94 J, 94 P, 94 O, all located within N. E. British Columbia.
2004-233	ALT	Brent Persello	Alterations to site DhQv-96 as a result of the MoT's proposed improvement of Highway 3A/97 between Okanagan Falls and Vaseaux Lake.
2004-234	ALT	Mike Crane	Cutting, felling, hauling, yarding and milling of CMT from sites DIRi-060 and DIRi-061 as a result of forestry operations proposed by Teal Cedar Products Ltd in Block ECT-2, Fraser TSA-FLA19201, located in the Stoyoma Creek drainage near Boston Bar, Chilliwack FD.
2004-235	INS	Ian Franck	AIA of a food processing complex proposed by Chilliwack Economic Partners Corporation located N. of the Trans Canada Highway to the E. of Yale Rd and S. of Semiault Creek, legal description PID 006-290-248, Parcel "H" (Ref. Plan 1285), DLs 264 and 265, Group 2 Except: Firstly: Part Subdivided by Plan 39160: Secondly: Part taken for Highway Statutory R/W Plan 57289 & PID 006-290-230, Parcel "F" (Ref. Plan 9478) Except Firstly: Parcel One (Re. Plan 10169) Secondly: Portions in Plan 9874, 35921, 36770 and P4244 Thirdly: Portions on Statutory R/W Plans 22279 and 60802 Fourthly: Part Dedicated Rd on Plan P7133, DLs 245, 264 and 265, Group 2, New Westminster Land District.
2004-236	INS	Ian Franck	AIA of forestry operations proposed by Chartwell Consultants Ltd. on behalf of the MoFs for the amendment of TSL A66520, located along the S. side of Foley Lake, Chilliwack FD.
2004-237	INS	David Hall	AIA for Cypress Forest Consultants, on behalf of the N. Coast FD's Timber Sales Program, Seaward Business Unit, Prince Rupert Field Team.
2004-238	INS	Peter Merchant	AIA of the MoT's proposed roundabout construction at the interSec of Highway 9 and Old Yale Rd, within Chilliwack District Municipality in Southwestern.
2004-239	INS	Bonnie Campbell	AIA of forest development activities proposed by Weyerhaeuser Canada Ltd. (Okanagan Falls Division), Gorman Brothers Lumber Ltd., and Timber Sales (Vernon) within the Okanagan Shuswap FD S. of Vernon, and within those parts of the Boundary Timber Supply Area that lie W. of the Kettle River within the Arrow Boundary FD.
2004-240	INS	Rob Paterson	AIA of existing and proposed oil and gas dev. on behalf of Peace River Hole Cementing and Exploration Services Ltd., and possible other proponents of the oil and gas industry, located in areas covered by NTS map sheets 94 O and 94 P, NE British Columbia.
2004-241	ALT	private property owner	Alterations to DiRw-028 with the construction of a single family residence located on Trail Bay within the District of Sechelt, Sunshine Coast.

2004-242	ALT	Gregory Belyea	Alterations to arch. site FiTm-007 from proposed logging operations within Timber Sale License A64600 on Banks Island by MoFs Timber Sales, Seaward (Tlasta) Business Area, N. Coast FD.
2004-243	ALT	Steven Day	Alterations to arch. site FgRr-007 (temporary site number M03-722-4-2) which may result from logging related activities planned by Slocan Forest Products Ltd. within CP 49U-4 (FL A57712), appx. 28 km W. of Quesnel, on the Nazko Highway at the beginning of the 2600 Rd, in the Quesnel FD.
2004-244	INS	Peter Merchant	Arch. inv. and impact assessment of various Hydro maintenance projects along the Cheekye - Malaspina No. 1 and No. 2 T/Ls, located between the height of land and Sechelt Inlet, in S.-Western British Columbia.
2004-245	INS	Peter Merchant	AIA of a proposed residential complex within Block 81, DL 1023, Plan 7238 and Amended Lot 2 (Explanatory Plan 10569), Except Part in Plan 19206, located at Madeira Park, Sunshine Coast.
2004-246	ALT	Scott Cousins	Alterations to arch. site EjRk-006 with the planned reconstruction of Gustafsen Lake Dam, including the upgrading of the existing access road and the removal and stockpiling of the existing earthen dam, located on the N. shore of Gustafsen Lake at its outlet to Dog Creek, W. of 100 Mile House, S. central British Columbia.
2004-247	INS	Margaret Rogers	AIA for a proposed subdivision of property within Lot B, Plan 21373, DL 49, Nanoose District, bounded by Mallard Rd and Pintail Drive in the vicinity of arch. site DiSc-31, near to Parksville.
2004-248	INS	Margaret Rogers	AIA of a single lot residential development proposed for Lot 20, DL 1, Newcastle District, Plan 20442, at 5387 Deep Bay Drive within the boundary of arch. site DiSe-007 on Deep Bay.
2004-249	INS	Brian Pegg	Arch. inv. and impact assessment for the City of Richmond's "Open Space Plan" concerning possible public space dev. within 27 ha. of city-owned land in the "Terra Nova N. W. Quadrant" and the adjacent waterfront located W. of Number One Rd between River Rd and Westminster Highway.
2004-250	INS	Andrew Mason	AIA of Bowen Island Properties Ltd.'s proposed residential/commercial neighbourhood development with ancillary dev. and amenities, located adjacent to Seymour Bay and the Napoleon and Josephine Creek drainages areas on the SE end of Bowen Island, Southwestern.
2004-251	INS	Joel Kinzie	AIA of forestry dev. proposed by the MoFs, and possible other licensees, operating within Timber Sales Skeena Business Area, Kalum and Skeena Stikine FDs.
2004-252	INS	Dan Weinberger	AIA of forestry dev. that may be proposed by Chasm Sawmills (Division of W. Fraser Mills Ltd.), and possibly other proponents, all within the Kamloops FD.
2004-253	INS	Barry P Wood	AIA of the proposed expansion of the Creston landfill located within that part of Sec 24, Tp 7, S. of D.L. 10772, Kootenay Land District, and E. of the Lower Kootenay Reserve (I.R. #1), Regional District of Central Kootenay.
2004-254	ALT	private property owner	Alterations to arch. site DhRt-6 (Locarno Beach Site) from proposed house renovations on Belmont Avenue, Vancouver.
2004-255	INS	Eric Forgeng	AIA of the proposed City of Port Alberni N. Port Sewer Overflow Abatement Project with a 1.5 kilometre-long P/L crossing of the Somass River and estuary, and to include sites DhSe-006, DhSf-016 and DhSf-043, located at the head of Alberni Canal, central Vancouver Island.
2004-256	ALT	Ryan Monsen	Cutting, felling, yarding, moving, milling and other alterations by Triumph Timber Ltd./593818 Ltd. to non-CMTs harvested from within the boundaries of 21 CMT sites, GdTn 7,10,12, 14 through 24 and GcTn 12, 22 through 27, as well as CMTs from these same sites which may be found to be danger trees or which are inadvertently disturbed during forestry operations in cut blocks HEB1, HEB3, HSLN2, HSLN10, LB1 and WB1, all of FL A60585, located in the vicinity of Work Channel, N. Coast FD.
2004-257	ALT	private property owner	Alterations to arch. site DcRu-788 with the proposed subdivision and related ancillary dev. of properties located at the interSec of Lagoon Rd and Aloha Avenue and extending in part to Anchorage Avenue, near Esquimalt Lagoon, City of Colwood.
2004-258	INS	Lisa Seip	AIA for the Corporation of the District of Maple Ridge of the proposed development of a new road interSec to the Albion Industrial Park which will connect Lougheed Highway to River Rd, located appx. 500 m E. of the Haney Bypass, Maple Ridge.
2004-259	INS	Monty Mitchell	AIA of International Forest Products Ltd.s proposed timber harvesting blocks, roads and ancillary dev. within those portions of the asserted traditional territories of the Gwa'Sala-Nakwaxda'xw, Heiltsuk, Kitasoo, Nuxalk and Oweekeno FNs that lie within the Mid Coast FD.
2004-260	INS	Monty Mitchell	AIA of Timber Sales' proposed timber harvesting blocks, roads and ancillary dev. within those portions of the asserted traditional territories of the Gwa'Sala-Nakwaxda'xw, Heiltsuk, Kitasoo, Nuxalk and Oweekeno FNs that lie within the Mid Coast FD.
2004-261	INS	Joel Kinzie	AIA of Hydro projects located within the Skeena Stikine FD.
2004-262	INS	Amanda Marshall	AIA of proposed and existing oil and gas dev. by BG Canada Exploration and Production Inc., and possible other clients to be identified, operating within NTS map sheets 94 B and 93 I, Peace River region, NE British Columbia.
2004-263	INS	Amanda Marshall	AIA of proposed and existing oil and gas dev. by BG Canada Exploration and Production Inc., and possible other clients to be identified, operating within NTS map sheets 94 G and 94 J, Peace River region, NE British Columbia.



2004-264	ALT	Sari Fleming	Possible alterations to arch. site DiRu-004 resulting from Kozul Holdings Inc.'s proposed Hydro power cable crossing of Centre Bay and Port Graves (Long Bay) on Gambier Island, Howe Sound, SW.
2004-265	INS	Amanda Marshall	AIA of proposed forestry operations for Timber Sales, Babine Business Unit within the Bulkley Timber Supply Area of the Skeena Stikine FD.
2004-266	INS	Shane Bond	AIA of the Phase 2 segment of the proposed Laburnum/Rupert Ring Rd, extending appx. 1.5 km S. of Andreef Rd and then turning E. to connect with Rupert Rd at Arbutus Street, located E. of the Little Qualicum River, Town of Qualicum Beach.
2004-267	INS	Marianne Berkey	AIA of routine, small-scale, non-capital dev. associated with the distribution and transmission of hydroelectric power planned by Hydro and Transmission Corporation for the S. Interior W. (Thompson-Shuswap) Service Area.
2004-268	INS	Chris Engisch	Arch. inv. and impact assessment of proposed forestry dev. by The Teal Jones Group within the Queen Charlotte Islands FD.
2004-269	INS	Paul Dagg	Alterations to CMT ("CMT") arch. site DeSg-051 that may result from the Huu-ay-aht FNs Forestry Ltd.'s proposed construction of the Keeshan Rd Project located on Bamfield Inlet on the W. coast Vancouver Island.
2004-270	INS	Peter Merchant	AIA of the proposed construction of a private moorage, including a wharf, pilings and a concrete approach ramp, within the unsurveyed foreshore or land covered by water being part of the bed of Secret Cove, Group 1, NWD, which is adjacent to Lot 2, DL 2309, Plan 10602, NWD, located on the Sunshine Coast.
2004-271	ALT	Wolfram Wollenheit	Removal, by standing stem aerial selection harvesting, of one non-culturally modified tree from within the boundaries of arch. site EdSj-012 (was temporary EdSj T1) as a result of the Wei Wai Kum FN's forestry operations within Woodlot Licence W1900 located at Loughborough Inlet within the Campbell River FD.
2004-272	INS	Rudy Reimer	Arch. research inv. and excavation in the Elaho, Ashlu and upper Squamish River valleys, possibly including work at arch. sites DIRt 2 to 5, EaRu 5, and an unrecorded rockshelter located above the confluence of the upper Squamish and Ashlu Rivers.
2004-273	ALT	Robert Ballinger	Alterations to CMT at arch. sites FITc-001, FITc-002 and FITc-003 from logging operations proposed by W. Fraser Mills Ltd., Skeena Sawmills Division, for Block 4-1100-2a, located appx. 30 km S. of Kitamaat Village within TFL 41, Kalum FD.
2004-274	INS	Clinton Coates	AIA of forestry dev. proposed by Timber Sales, Kamloops Timber Sales Office, in cut blocks 108, 110, 112 and 117, all located in the Heller Creek area appx. 45 km NW of Kamloops in the Kamloops FD.
2004-275	INS	Daryl Fedje	Arch. inv. of selected coastal areas of Haida Gwaii focusing on the E. coast and the area between Tangil Peninsula and Skidegate Inlet.
2004-276	ALT	private property owner	Possible disturbance to arch. site DgRw 34 during proposed foundation excavation and expansion to existing house and revisions to existing driveway on Nelson Rd, Nanaimo.
2004-277	INS	Peter Merchant	Arch. inv. of selected areas within the ATT of Sechelt Indian Band, including McCannel Lake, Smanit Lake, headwaters of Osgood Creek, headwaters of Sechel Creek, head of Brittain River Valley, headwaters of the Skwawka River, headwaters of the Hunaechin River, and the mid and upper elevations of Mount Victoria.
2004-278	INV	Bill Angelbeck	Systematic collection of C-14 samples and surface collection of artifacts from arch. site DgRr 5, located on Lot A, Sec 18, Tp 1, PlanP 7918, NWD, at 2063 Indian Fort Drive above Boundary Bay, Surrey.
2004-279	ALT	Cameron Simpson	Alterations (cutting, felling, yarding, hauling, milling, road construction and silvicultural activities) at CMTs (CMT) sites, GgSp-076, GgS-078, GgSp-079 and appx. 50 unrecorded pre-1846 "outlier" CMTs located outside the recorded boundaries of these sites, as a result of timber harvest and road construction within Houston Forest Products Company's dev. all within CP 547 (formerly CP 544), FL A1682, Nadina FD, and located E. of Babine Lake and N. of Smithers Landing, N. N.-E. of Houston, in W.-central British Columbia.
2004-280	INS	Hugh Middleton	Arch. inv. for MoT, Cariboo District, of the proposed construction and realignment of a 23 km Sec of Highway 20, located W. of Anahim Lake between the Green River and Pelican Creek bridge crossings.
2004-281	INS	Hartley Odwak	AIA of forestry dev. proposed by International Forest Products Limited, Campbell River Operations, for the Queen Charlotte Strait and adjacent mainland region, including Broughton Island, Gilford Island, Wakeman River and Sound, and Kingcome Inlet and River, N. Island-Central Coast FD.
2004-282	ALT	Michelle J Schilling	Alterations to sites EjRe-019 and-027 from the MoT's proposed upgrades to the N. Bridge Lake Rd, located on the N. shore of Bridge Lake, between, on the W., its interSec with Ross Rd and, on the E., the bridge at Stack Lake.
2004-283	INS	Amanda Marshall	AIA of the Regional District of Kitimat-Stikine's proposed S. Hazelton water system upgrade near Chicago Creek located about four km S. of the confluence of the Skeena River and Bulkley Rivers.
2004-284	ALT	private property owner	Alterations to DgRr-001 (the Crescent Beach arch. site), that may result from a deck addition to an existing residence and new garage construction on O'Hara Lane in the city of Surrey.
2004-285	ALT	Ryan Monsen	Cutting, felling, yarding, moving, milling and other alterations by Triumph Timber Ltd. to non-CMTs harvested from within the boundaries of CMT sites FkTI 6 to 25, as well as CMTs from these same sites which may be found to be danger trees or which are inadvertently disturbed during forestry operations in FL A16820, Blocks BK2A, BK2C, BK2D, BK3B, BK5A and BK5B, located in the vicinity of Baker Inlet, N. Coast FD.

2004-286	INS	Robert Vincent	AIA of Weyerhaeuser (Queen Charlotte Timberlands) proposed timber harvesting blocks LD2A, LD2B, LD3, LD9S, LD10S, LD13S, LD14S on Louise Island and Cutblock C2, Carmichael Passage, Moresby Island and associated dev., all within the Queen Charlotte Islands FD.
2004-287	INS	Robert Vincent	AIA of Teal Jones' proposed forestry cut blocks and associated dev. for blocks COPP05, CHAN12, LONG39, MAUD11, MAUD13, MAUD15 and SOBY02 and future unspecified dev. in the vicinity of block SOBY02 all located along the shorelines of Skidegate Inlet, Queen Charlotte Islands FD.
2004-288	INS	Dan Weinberger	AIA for Petrobank Energy and Resources of a proposed oil and gas development, including a well, remote sump, alternate sump and 128 m of access road, all located within DL 406, SDYD, W. of Bromely Creek and SW of Princeton.
2004-289	INS	Dan Weinberger	AIA of Young Life of Canada's proposed re-establishment and raising of an existing dam at Lorne Lake and other dev. related to a camp facility currently under construction in the Wolfe Creek Valley near Princeton.
2004-290	INS	Heather Pratt	AIA for Dorman Timber Ltd of a proposed log handling and storage area within DL 2950, NWD., located on the SE end of Nelson Island on the Sunshine Coast.
2004-291	INS	Mike Rousseau	AIA of forestry dev. proposed by Federated Co-operative Limited for the Shuswap region of the Kamloops FD.
2004-292	INS	Ian Franck	AIA for Scott Resource Services Inc of the District of Mission's proposed extension of the Cedar Valley Connector Rd, located above Windebanks Creek between Fraser Crescent and Briskham St, Mission.
2004-293	INS	Barry Wood	AIA of the proposed residential subdivision of DL 334, NEP 70541, Lot 6, Kootenay Land District located on the W. side of Wolfe Creek Rd, about 1.5km N. of Wasa Lake.
2004-294	ALT	private property owner	Possible alterations to arch. site DgRs-009 arising from construction of a new house and garage and associated service lines on Tsawwassen Beach Rd, Tsawwassen.
2004-295	INS	Sandra Witt	AIA of forestry operations proposed for NRFL A73168, CP 4, located appx. 10 km SW of Ashcroft, Kamloops FD, by Northern Nlaka'pamux Forest Resources Limited, and the construction of a new 'drift' fence on behalf of the Nlaka'pamux Nation Tribal Council, extending N. from Venables Rd to Oregon Jack Creek.
2004-296	INS	Jeff Bailey	AIA for Mountain Cat Mining Dev. of the proposed expansion of placer mining and gravel extraction areas, and ancillary dev. such as construction of road and buildings, installation of water and power lines, and placement of sluice boxes and gravel screening operations, all located at the mouth of Siwhe Creek, on the W. side of the Fraser River appx. 22 km N. of Lytton in the vicinity of arch. sites EcRk 13, 20, 30 and 31.
2004-297	INS	Joel Kinzie	AIA of the MoT's proposed highway dev. in the Peace District of Northeastern British Columbia.
2004-298	INS	Nicole Jackman	AIS for the Stellat'en FN in the areas of Stern Lake, Justine Lake, Tatin Lake and Hanson Lake, located in portions of the Vanderhoof and Nadina FDs.
2004-299	INS	Clinton Coates	AIA of Brilliant Expansion Power Corporation's proposed expansion of an existing power T/L corridor located SE of the Brilliant Dam site near Castlegar.
2004-300	INS	Bjorn Simonsen	AIA of select areas within the Kinsmen-Gorge Park and adjacent Tp of Esquimalt nursery located in the Gorge Rd-Tillicum Rd and Craigflower Rd area, Corporation of the Tp of Esquimalt, Greater Victoria.
2004-301	INS	Ryan Spady	AIA of forestry dev. proposed by Cariboo Forest Consultants Ltd. within the Quesnel FD.
2004-302	INS	Peter Merchant	AIA for W. Coast Fishculture (Lois Lake) Ltd. of a proposed fish farm within the unsurveyed foreshore or land covered by water being part of the bed of Malaspina Inlet, Texada Land District, located E. of Raven Bay on the N. side of Texada Island.
2004-303	INS	Monty Mitchell	AIA of Triumph Timber Ltd.'s proposed timber harvesting blocks and associated dev. within the N. Coast FD.
2004-304	INS	Gail Wada	AIA of the proposed construction of a single residential house at 5186 Kinskill Drive, Lot 79, Sec 10, New Westminster Land District, Plan 24940, 7WP5, at Tsawwassen.
2004-305	ALT	Guy Cicon	Alterations to arch. site DhSe-006 with the upgrading of an existing access road and installation of a 1.5 kilometre-long P/L across the Somass River and estuary at the head of Alberni Canal as part of the proposed construction of the City of Port Alberni's N. Port Sewer Overflow Abatement system.
2004-306	ALT	private property owner	Alterations to unrecorded arch. deposits and materials in the vicinity of arch. sites EcQt-008 and EcQt-012, which may result from backfilling of an existing construction excavation, ancillary activities and concurrent arch. studies, all related to installation of a geothermal residential heating system on Otter Lake Rd, on the SW shore of Otter Lake, located appx. 6 km SW of Armstrong, in the N. Okanagan region of Southern.
2004-307	INS	Susan McNeney	AIA on behalf of Building Corporation of the site of the former Likely District Forest Offices within Lot 6320 Cariboo land District, located on the E. shore of Quesnel Lake, at the confluence of Cedar Creek appx. 65 km N.-NE of the city of Williams Lake, in the central Cariboo region.
2004-308	INS	Hugh Middleton	AIA for MoT, Cariboo District, in those areas of arch. potential identified in a proposed area of expansion to existing Towdystan Gravel Pit No. 1915, located on the W. side of the Dean River S. of Nimpo Lake, in the vicinity of DL 1007, Rge 3, Coast District.
2004-309	INS	Dan Weinberger	AIA of forestry dev. that may be proposed by British Columbia Timber Sales, and possibly other proponents, all within the Kamloops FD.

2004-310	INS	Joel Kinzie	Arch. inv. and impact assessment of the proposed NEMI Northern Energy and Mining Inc Trend Project, including proposed mine pits, access roads, plant site, rail extensions, loadout areas and other possible ancillary dev., located S. of Tumbler Ridge in an area bounded by Murray River on the W., Babcock and Hamber Creeks on the E., and Flathead Creek on the N.
2004-311	INS	Frank Craig	AIA of Southern Rio Resources Ltd.'s proposed mining exploration dev. in the Tommy Lakes area located within the Naglico Hills to the N. of the Blackwater River, Nechako Plateau.
2004-312	INS	Ian C. Franck	AIA of the MoT's proposed construction of new connector routes to the Lougheed Highway (Highway 7) between Hayward and Donatelli Streets, located between Whonnock and Silverdale.
2004-313	INS	Ian Wilson	AIA of a proposed building site for the Qualicum Beach Memorial Golf Course located within the boundary of arch. site DiSc-026 on Lot A, Plan 9145, DL 63, Newcastle Land District, Town of Qualicum Beach.
2004-314	ALT	Robert Ballinger	Alterations to arch. sites FITd-011, FITd-012 and FITd-013 from logging operations proposed by W. Fraser Mills Ltd., Skeena Sawmills Division, for Block 4-4-3, located appx. 25 km SE of Kitamaat Village within the Dala River drainage, TFL 41, Kalum FD.
2004-315	ALT	private property owner	Alterations to arch. deposits and materials in the vicinity of arch. site DkSf-T1 (temporary number) which may result from completion of lifting and moving an existing residence on Comox Rd, City of Courtenay, on Vancouver Island.
2004-316	ALT	private property owner	Alterations to arch. site DkSf-024 resulting from the construction of a single-family residence on Comox Rd, City of Courtenay, Vancouver Island.
2004-317	ALT	David Jewesson	Alterations to arch. site GeRo-002 from forestry operations proposed by The Pas Lumber Company Ltd. for Block 154, CP 929, FL A18171, located N. of Prince George on the S. bank of Tacheeda Creek, E. of Tacheeda Lakes, Prince George FD.
2004-318	INS	Peter Merchant	AIA of the proposed construction of a single-family residence within Lot 3, Blk 3, D.L. 1327, Plan 7274, located at 8485 Redroofs Rd, near Halfmoon Bay on the Sunshine Coast.
2004-319	INS	David Hall	AIA, on behalf of the Lillooet Tribal Council, of Ainsworth Lumber Ltd.'s proposed forestry operations under CP 209 within the Blowdown Creek Drainage area located in the Cascades FD near Lillooet.
2004-320	ALT	Dave Currie	Alterations to arch. site DhRq-053 with the City of Coquitlam's proposed construction of the David Avenue Connector, extending along David Avenue from Coast Meridian Rd across the Coquitlam River to P/L Rd, Coquitlam.
2004-321	ALT	private property owner	Minor possible disturbance to arch. site DhRt-006 from placement of pier footings during proposed renovations to residence located on N. W. Marine Drive, Vancouver.
2004-322	ALT	Richard Krupop	Alterations to culturally modified tree sites GcTd-031, GcTd-013 and GcTd-014 from logging related activities planned by the MoFs for the Thunderbird Development Area TSL A49457 and A56484 located appx. 15 km S. of Terrace, Kalum FD.
2004-323	ALT	Richard Krupop	Alterations to culturally modified tree site GcTd-028 from logging related activities planned by the MoFs for the Thunderbird Development Area, TSL A48358, located appx. 20 km S. of Terrace, Kalum FD.
2004-324	INS	David Hall	AIA of forestry operations that may be proposed by Triumph Timber Ltd. within the N. Coast FD.
2004-325	INS	Richard Brolly	AIA of Public Works and Government Services Canada's proposed reconstruction and upgrading of the Canada Customs facilities at the Cascade Border Crossing, Highway 395 located S. of Christina Lake which includes work within the prov.ly controlled highway R/W.
2004-326	INS	Tanja Hoffmann	Arch. inv. and assessment along and adjacent to portions of the N. shore of Seton Lake in connection with possible development by Rail and reservoir operations by Hydro.
2004-327	INS	Bruce Ball	AIA of forestry dev. proposed by MoFs Timber Sales, Kootenay Business Area, in the Arrow Boundary FD.
2004-328	ALT	David Martin	Alterations to portions of arch. site GdTd-33 from logging operations proposed by A&A Trading Ltd. within Block 145508, Chart No. 2 - Newton Creek Chart of FL A16836, on the SW side of Newton Creek 2.5 km upstream of the Skeena River, Kalum FD.
2004-329	ALT	Tom Osborne	Possible disturbance by the Regional District of Nanaimo to arch. site DgRw 4 during proposed expansion and minor upgrades to an existing parking area on Narrows Rd, located between Lots 15 and 16, Plan 17835, Sec 28, Nanaimo Land District, on the SW side of Gabriola Island.
2004-330	ALT	Norm Parry	Alterations to culturally modified tree sites FjTf-11, FjTf-12 and FjTf-13 from road construction activities to be conducted by Timber Sales (Skeena Business Area) on the Evelyn Forest Service Rd, located near Evelyn Lake and N. Kitsaway Anchorage on the SE side of Hawkesbury Island, Kalum FD.
2004-331	INS	Douglas Brown	AIA of No Cents Holdings Ltd.'s proposed rock quarry, processing and loading facility within DL 449, Cariboo Land District, Rge 3, located about 5 km W. of Bella Coola on the S. side of N. Bentinck Arm.
2004-332	INS	Hugh Middleton	AIA of proposed forestry operations by Pioneer Log Homes within portions of the Chilcotin, Vanderhoof and Quesnel FDs.
2004-333	INV	Dan Weinberger	Investigations of arch. site EjRk-6 as mitigation of impacts arising from Canoe Creek Indian Band's repair/rehabilitation of Gustafsen Lake Dam in a part of the site located just W. of the dam.



2004-334	INS	Matthew Begg	AIA of the MoT's routine ground disturbing activities in the Bulkley Stikine District 10 and Skeena District 11 in the MoT Northern Region.
2004-335	INS	Bonnie Campbell	AIA of proposed improvements to the existing Canadian Pacific Railroad line between Rocky Point Bluff and Neskonlith IR #2, located E. and W. of Pritchard and near Kamloops.
2004-336	ALT	Mike Kent	Alterations to arch. site DgRq-040, situated on a SE facing terrace above the Serpentine River floodplain, with the proposed upgrading of Highway 10 at the interSec of 156th Street, Surrey.
2004-337	ALT	Cameron Simpson	Alterations to arch. sites GhSo-024 and GhSo-027 from logging operations proposed by Houston Forest Products Company for CP 584, Block MOR-4, F.L. A16827, located 36 km N. of Granisle, W. of Morrison Lake, Nadina FD.
2004-338	INS	Peter Merchant	AIA for the Sunshine Coast Regional District's proposed camp site expansion, development and improvements at an existing recreational facility within DL 3924 and DI 3926, NWD, located at the NE corner of Klein Lake, near the community of Egmont on the Sunshine Coast of SW.
2004-339	INS	Jim Stafford	AIA of the planned upgrading and maintenance by the Namgis FN of the Woss Lake trail, EaSp-002, extending from the S. end of Woss Lake to the height of land near Rugged Mountain, Woss Lake Prov. Park.
2004-340	INS	Barry Wood	AIA of forestry dev. proposed by Atco Lumber Ltd, and possible other clients to be identified, operating within the Arrow Boundary FD, Southern Interior Forest Region, within the W. Kootenays of Southeastern.
2004-341	ALT	Larry Gardner	Alterations to culturally modified tree site FhRI-3 from logging related activities to be conducted by the W. Fraser Mills Ltd in TFL 52, CP 5C, Block NBV3 located E. of Crescent Lake in the Big Valley area NW of Quesnel, Quesnel FD.
2004-342	ALT	Larry Gardner	Alterations to culturally modified tree site FhRI-4 from logging related activities to be conducted by the W. Fraser Mills Ltd in TFL 52, CP 208, Block 1 located E. of Cameron Lake in the Big Valley area NW of Quesnel, Quesnel FD.
2004-343	ALT	James Thorner	Alterations to arch. site DjQb-002 from Tembec Industries Inc's proposed upgrades to the St Mary Lake's forestry campground, located in Sublot 39, DL 4592, Kootenay District Plan X30, at the E. end of St Mary Lake on the SE side of the St Mary River appx. 16 km SW of Kimberley.
2004-344	ALT	Cameron Simpson	Cutting, felling, yarding, moving, milling and other alterations of beetle-infested CMT and ground surface within arch. site GgSo-055 and GgSo-056, resulting from Houston Forest Products Company's proposed timber-harvesting and road-building in CP 564, Cutblocks MOR33 and MOR34, FL A16827, located in the Morice TSA of the Nadina FD NW of Babine Lake and Old Fort Mountain.
2004-345	INS	Peter Merchant	Arch. inv. and impact assessment of the proposed construction of a residential dwelling and private wharf on Williams Island, located on the Sunshine Coast at the mouth of Pender Harbour between Henry Point and Charles Island.
2004-346	INS	Clinton Coates	AIA within Rem NW 1/4 Sec 11, TP 23, R10, located at Blake Point on the N. side of Shuswap Lake between Celista and Magna Bay, for the proposed creation of 11 residential lots and an adjoining park, and subsequent land-altering activities such as house and road construction and installation of water and sewage systems.
2004-347	INV	Dan Weinberger	Mitigative data recovery from arch. site DiRc-70 in connection to Young Life of Canada's construction of a dam between Lorne Lake and Jackson Lake in the Wolfe Creek Valley near Princeton.
2004-348	INS	Bruce Ball	AIA for proposed Crown Land sale of two lots (Lot 2, DL 3945, ODYD, Plan 5194 and Lot 14, DL 394, ODYD, Plan 5194) both located on Mabel Lake near the outflow of the Shuswap River.
2004-349	INS	Geordie Howe	AIA for FortisBc of the proposed development of the 23 km long 138kv Big White T/L from the existing Joe Rich Substation at Daves Creek to a new Big White Substation at Big White Ski Resort, Okanagan Valley.
2004-350	ALT	Dwain Hornland	Alterations to arch. site HbRf-053, as a result of a road and slope stabilization project at the W. Bypass Rd crossing of Stoddart ("Fish") Creek, located appx. 1900 metres N. of the interSec of 100th Avenue and the Alaska Highway in Fort. St. John, in Northeastern.
2004-351	INS	Beth Hrychuk	AIA of Duke Energy Gas Transmission's Salmon River revetment project designed to control erosion at the existing P/L crossing located about 25km N. E. of Prince George.
2004-352	ALT	private property owner	Alterations to arch. site DdRu-004 with the installation of a sewer line servicing located at Lochside Drive, Sidney.
2004-353	INS	Clinton Coates	AIA of Twin Anchors Marina's proposed resort marina, residential development and related ancillary facilities located D.L. 528 & 529, KDYD at Old Town Bay, N. shore of Shuswap Lake at the mouth of the Eagle River at Sicamous.
2004-354	INV	Ty Heffner	Investigations of arch. site FgRw-071 as compensatory mitigation of impacts arising from Canadian Forest Product's harvesting operations within FL A20011, CP 700, Block 1, and limited surface collection of artifacts for comparative purposes from FfRw-012, both sites located near the Baezaeko River in the Quesnel FD.
2004-355	ALT	Peter Verschoor	Cutting, felling, yarding, moving, milling, dating and other alterations by Iisaak Forest Resources Ltd to standing CMT #'s 512, 513, 515, 518, 578, 579, 587 to 602, 606 and 607, part of arch. site DiSm-003, which is located in cut block 40.24.50, TFL 57, in Clayoquot Sound on the E. shore of Millar Channel and N. of Ross Passage, S. Island FD.

2004-356	ALT	Robert Walker	Alterations to arch. site EbPx-077 arising from utility trench, septic field and driveway construction associated with residential development on portions of the Bella Vista Subdivision (Lot 8 and Lot 39, part of DL 4596, Kootenay District) located near the N. W. corner of Columbia Lake.
2004-357	INS	Bjorn Simonsen	AIA of a proposed two lot subdivision at 2595 Battersea Rd, situated at the Departure Bay locality within the City of Nanaimo.
2004-358	INS	Dan Weinberger	AIA's for forestry operations within the Mackenzie FD as proposed by Canadian Forest Products Limited (Mackenzie Operations) and other proponents as may be identified.
2004-359	INS	Shane Bond	AIA of forestry dev. proposed by Teal Cedar Products Ltd within the Chilliwack FD.
2004-360	ALT	Robert Ballinger	Alterations to arch. site FITc-5 from logging operations proposed by W. Fraser Mills Ltd., Skeena Sawmills Division, for Block 4-1120-2, located appx. 25 km SE of Kitamaat Village within the Dala River drainage, TFL 41, Kalum FD.
2004-361	INS	Lea McNabb	AIA of forestry operations proposed by W. Fraser Mills Limited for Cut Block 682-01, TSLA18690, located E. of Chartrand Lake near Deadman Valley, Kamloops FD.
2004-362	INS	Bruce Ball	AIA for proposed forestry operations by Jim Handly and Adriana Work within Woodlot 167, located in the Kootenay Lake FD on the N. side of the W. Arm of Kootenay Lake in the general area to the N. of and between the towns of Taghum and Beasley.
2004-363	INS	Chris Engisch	Arch. inv. and impact assessment of proposed construction at 131 Carthew Street, Comox, including a garage and possible ancillary dev. such as connection and/or servicing lines, in the vicinity of arch. site DkSf-010.
2004-364	INS	David Schaepe	Arch. inv. of a 1.68 hectare parcel, described as Parcel "A" (Reference Plan 4777), Lot 4, DL 341, Group 2, New Westminster District, Plan 949, located at 8855 Elm Drive, City of Chilliwack.
2004-365	INS	Stanley Copp	AIA's on behalf of Gorman Brothers Lumber Ltd. for proposed forestry operations in FL A18671, Blocks E-1 to E-26, and other forestry dev. that may be located in the Ashnola River watershed, Okanagan-Shuswap FD.
2004-366	INS	Shane Bond	AIA of forestry dev. proposed by Weyerhaeuser Forest Products Ltd., Port McNeill Timberlands, for TL TO487, blocks 6810, 6833, 6834, 6835, 6870, 6871, 7813, 7817, 7822 and 7823, in the vicinity of Shoal Harbour and Heath Lagoon on the W. side of Gilford Island, located within the N. Island - Central Coast FD.
2004-367	INS	Morley Eldridge	AIA of the MoT's proposed marine erosion protection program for the Yellowhead Highway between Skidegate and Tlell on the E. coast of Graham Island, and near Alliford Bay, Moesby Island, and ancillary dev. including the Honna borrow pit located on Kagan Bay, Haida Gwaii.
2004-368	INS	Barbara Kulle	AIA for Hunt Oil Company of Canada Inc.'s proposed wellsite b-22-A/94-B-14, associated ancillary facilities and access road in the vicinity of the Chowade River valley, located appx. 230 km WNW of the City of Fort St. John in NE.
2004-369	INS	Geordie Howe	AIA's for forestry operations as proposed by Forsite Forest Management Consultants on behalf of Timber Sales within the Mackenzie FD.
2004-370	ALT	Sandra Keddy	Alterations to arch. site DiSc-026 resulting from proposed trench excavations to provide separate underground services to Lots 13 & 14, Pl. 3399, D.L. 62, Newcastle District, located at Judges Row in the Town of Qualicum Beach.
2004-371	INS	Andrew Mason	AIA of the Village of Masset's proposed dock and small craft marina, located on Masset Inlet, Queen Charlotte Islands.
2004-372	INV	Lisa Seip	Systematic mitigative data recovery and follow up monitoring of impacts to arch. site DgRs-9 resulting from proposed residential redevelopment of 822 and 832 Tsawwassen Beach Rd, Delta.
2004-373	INS	Bjorn Simonsen	AIA of Columbia Power Corporation's proposed Waneta Hydroelectric Expansion Project, involving select areas in the vicinity of the Waneta Dam at the confluence of the Columbia and Pend d'Oreille Rivers, S. of Trail.
2004-374	INS	Brian Pegg	AIA of forestry dev. as may be proposed by Tyhee Forestry Consultants Ltd., within the N. Coast FD, including two project areas N. of Cypress Lake and at Staniforth Point.
2004-375	INS	David Hall	AIA of proposed forestry operations proposed by Interfor, N. Coast Division, for the areas of Surf Inlet, Gil Island, Belowe Lake, Red Bluff Lake and Farrant Island, FLA16841, N. Coast FD.
2004-376	ALT	Mike Carson	Alterations, during harvest or road construction by Ainsworth Lumber Company Ltd and Ts'kw'aylaxw Forest Company, to CMTs 4, 8 and 11 from EfRk-098 and CMTs 113 to 120 and 130 to 132 from EfRk-092, located within CP 190, Blocks 1 and 2, respectively, NE of Pavilion, in the Milkbranch Creek drainage, Lillooet FD.
2004-377	ALT	private property owner	Alterations to arch. site DiSe-007 from the proposed construction of a single-family residence at Deep Bay Drive, Deep Bay.
2004-378	ALT	Les Pawlak	Cutting, felling, yarding, moving, milling, dating and other alterations by Timber Sales, Seaward Business Area, N. Coast FD, to a total of 31 CMTs (as well as non-CMTs) from six arch. sites as follows: CMT #s 34, 35, 39 & 40 from site FjTf-020; CMT #41 from FjTf-021; CMT #s 7-18, 22 & 23 from FjTf-024; CMT #s 2-4 from FjTf-025; CMT #s 6, 7 & 14-16 from FjTf-026, and; CMT #s 5 & 7-9 from FjTf-027, all located near Mary and Moody Points on the S. side of Verney Passage, within TSL A53180, Blocks A (FjTf 20 & 21), B (FjTf 24), C (FjTf 25 & 26), and E (FjTf 27).

2004-379	ALT	Norm Parry	Alterations to culturally modified tree sites FjTf-14, FjTf-16, FjTf-17 and FjTf-18 from forestry development activities to be conducted by Timber Sales (Skeena Business Area) associated with Timber Sale License A45975 (formerly known as A64292, Blocks 1 and 2), located S. of Evelyn Lake and E. of Danube Bay on the SW side of Hawkesbury Island, Kalum FD.
2004-380	INS	Amanda Marshall	AiAs of portions of the proposed Stewart to Omineca Resource Rd located in the Skeena Stikine FD, in NTS mapsheet areas 93 M/12 & 13, 94 D/04 and 103 P/09 & 16.
2004-381	INS	Susan Woods	AIA, on behalf of the Lillooet Tribal Council, of forestry dev. proposed by Ainsworth Lumber Ltd. within CP 212, located immediately NW of Lillooet in the upper portions of the Dickey Creek and Town Creek drainages within the Town Creek Fire (K70099) Timber Salvage Area, Cascades FD.
2004-382	INS	Susan Woods	AIA, on behalf of the Lillooet Tribal Council, of forestry dev. proposed by Ainsworth Lumber Ltd. within the Seton Lake Fire (K70112) Timber Salvage Area, located on the S. side of Seton Lake near its E. end, Cascades FD
2004-383	INS	Clinton Coates	AIA within the S. 1/2 of DL 1751, Lillooet Land District, located on the N. side of Big Bar Lake, N. of Clinton, for the proposed construction of a lake-front resort, and related ancillary dev. such as road construction and installation of water, power line and sewage systems.
2004-384	INS	Barry Wood	AIA for Lakeland Contracting Ltd. of the proposed residential three lot subdivision of Lot 1, DL 21, Kootenay District, Plan 8574, located on the W. side of Windermere Lake extending S. from the mouth of Brady Creek in the vicinity of arch. site EcPx-024.
2004-385	INS	Barry Wood	AIA of the proposed Elkhorn Ranch residential subdivision of portions of DL 4596 and DL 7155, REM S.L. 111, Plan X32, Kootenay District, located on the E. side of Windermere Lake adjacent to parts of the N. and S. boundaries of Columbia Lake Indian Reserve No. 3.
2004-386	INS	Owen Grant	AiAs of Coulson Forest Products Limited's and possible other clients' proposed timber harvesting blocks and associated dev. within portions of the S. Island FD.
2004-387	INS	Nicole Nicholls	AIA of proposed construction activities related to the Sooke community sewer system project.
2004-388	INS	Dan Weinberger	AIA for development of the proposed Redwater Creek Bottling Plant and Well Site, and ancillary dev., located W. of Nazko along Redwater Creek, between DLs 9908 and 2144, Cariboo District.
2004-389	ALT	Mike Crane	Timber harvesting and road construction within site DIRi-062, including cutting, felling, hauling, yarding and milling of CMT 2 through 9, as a result of forestry operations proposed by Teal Cedar Products Ltd within Fraser TSA-FL A19201, Block SA-3, Chilliwack FD.
2004-390	ALT	Mike Crane	Timber harvesting and road construction within sites DIRi-063 and DIRi-064, including cutting, felling, hauling, yarding and milling a total of 12 CMT from sites DIRi-063 (CMTs 2-4, and 6-11) and DIRi-064 (CMTs 2-4), as a result of forestry operations proposed by Teal Cedar Products Ltd within Fraser TSA-FL A19201, Block SA-4, Chilliwack FD.
2004-391	ALT	Timothy Neufeld	Alterations to DgRr-001 (the Crescent Beach arch. site), that may result from Surrey Parks' proposed in-ground garbage can expansion project and other alterations within Surrey Parks property at Crescent Beach, in the city of Surrey.
2004-392	INS	Morley Eldridge	AIA for Western Forest Products' proposed operations on Moresby Island, Haida Gwaii, within logging block 406, located at Wilson Bay, Block B5H at Botany Bay, Block 276H at Pacofi Bay, and Blocks M101, M102, M103, M104, M106, M107 & M111 at the W. end of Mosquito Lake.
2004-393	INS	Gail Wada	AIA of Interpac Resources Limited's proposed Spuzzum Creek Hydroelectric Project located within the Spuzzum Creek valley, N. of Yale.
2004-394	INS	Dan Weinberger	AIA of proposed beetle salvage forestry operations near the Manning Park Visitor Centre and Hampton Campground, within Manning Prov. Park, W. of Princeton, Chilliwack FD.
2004-395	INS	Dan Weinberger	AIA for the proposed expansion of DL 73, Lillooet Land District, located near the E. end of Chimney Lake, to include current Crown Land located between the lake and DL 73 and between Chimney Creek and Chimney Lake Rd, on which arch. sites EIRI 15 and 16 are located, and the subsequent use of the annexed property for haying.
2004-396	ALT	Peter MacLean	Possible alterations to arch. site FhRs-085 during proposed forestry operations within Woodlot 1517, CP Z, Blocks 113 and 114, located on the N. side of the Blackwater Rd, NW of the confluence of Pantage Creek with Pantage Lake, Quesnel FD.
2004-397	INS	Casey O'Neill	AIA of Western Canadian Coal Corporation's proposed Hermann Syncline pit, and ancillary dev., located to the S.-SW of the community of Tumbler Ridge, S. of the Wolverine River, Northeastern.
2004-398	INS	Margaret Rogers	AIA of a single-family residential development proposed for Lot 14, Plan 3399, DL 62, Newcastle District, located on the S. side of Judge's Row, Qualicum Beach.
2004-399	INS	Barry Wood	AIA of Schickedanz BROS Limited's proposed 82-hectare residential subdivision of Parts of DLs 7579 and 9042; and Part Parcel 1 of DL 7578, PID 012-507-491, Except Plan R316; PID 012-507-351 Parcel I, DL 7578; PID 012-507-407, DL 7579, Kootenay District, located on the N. side of the Village of Radium Hot Springs.



2004-400	INV	Dan Smith	Research Investigations of CMT in the general vicinity of Upper McKay Creek in the Camelsfoot Rge, NW of Pavilion Indian Reserve 1.
2004-401	INS	Chris Engisch	AIA of forestry dev. proposed by Western Forest Products Ltd. for TFL 25, Block 5, and other timber harvesting operations in the areas of Roderick and Pooley Islands, Green and Cougar Inlets, and the W. side of Don Peninsula, N. Island-Central Coast FD, within the ATT of the Kitsoo Band Council.
2004-402	INS	Clinton Coates	Arch. inv. and impact assessment within Lots 1 and 2, Plan KAP 96328, Sec 25, Tp 22, Rge 12, W6M, KDYD, located appx. 2 km NE of the mouth of the Adams River on the N. side of Shuswap Lake, in the vicinity of arch. sites EfQv-001 and EfQv-153, for a proposed 6 acre residential subdivision development which includes activities such as house and road construction, landscaping, and installation of water, power and sewage systems.
2004-403	ALT	Les Sam	Alterations to arch. sites DfSg-057 and DfSg-081 through 088, from harvesting operations proposed by Tsemac Manufacturing Limited for Cutblocks T6 and T7, TSL A42274, Tzartus Island, S. Island FD.
2004-404	ALT	Katharine VanSpall	Alterations to arch. site EIRI-004, located on the NW shore of Chimney Lake, S. of Williams Lake, with Ducks Unlimited's construction of a barbed wire fence along both sides of Chimney Creek from the edge of Chimney Lake for appx. 40 metres towards Chimney Lake Rd S., Central Cariboo FD.
2004-405	ALT	Norman Isherwood	Alterations by Isherwood Holdings, Norwood Holdings and 258957UD to arch. site DcRt-10 arising from renovations and improvements to adjoining properties located at 2359 and 2333 Beach Drive and 2358 Esplanade as well as adjoining areas of Municipal land for service line hookups, all in Oak Bay near Willows Beach Park.
2004-406	INS	Monty Mitchell	AIA of International Forest Products Ltd.'s proposed timber harvesting blocks and associated dev. on Kennedy Island, Scotia River, Big Falls, Hayward Creek and Ayton Creek, Farrant Island, Surf Inlet and Work Channel, N. Coast FD.
2004-407	INV	Shane Bond	SDR of that portion of arch. site DhSb-002 located on Lot B, DL 89, Nanoose District and Part Formerly the Bed of the Strait of Georgia, Plan VIP77091, affected by the planned redevelopment of the Parksville Beach Resort, Parksville.
2004-408	INS	David Hall	AIA for Cypress Forest Consultants, on behalf of the Kalum FD, of proposed forestry operations within TFL 41 in the Heysham Creek operating area, located on the E. side of Devastation Channel opposite Dorothy Island.
2004-409	ALT	Terry Lazaruk	Cutting, felling, yarding, moving, milling and other alterations by Plateau Forest Products Ltd of CMT which are part of arch. site FiSc-045, located SW of Vanderhoof within CP 651, Block 571, FL A18157, Vanderhoof FD.
2004-410	INS	Gordon Moore	AIA of a proposed MoT upgrade for a 3.2 km long and 66 foot wide Sec of Hwy 99 between Hwy 97 on the E. and the Hat Creek IR 2 on the W.
2004-411	INS	Bjorn Simonsen	AIA for the Municipality of Oak Bay's proposed underground utility trench along about 400m of Beach Drive between Currie and Margate Rds in the vicinity of DcRt-18, near Turkey Head, Oak Bay.
2004-412	INS	Bjorn Simonsen	AIA for the proposed construction of three four-unit strata buildings within Lots 1, 2 and 3 of Block N, Sec 6, Rge 4, Amended Plan 79, Cowichan District, located on the S. side of Bottwood Lane, Cowichan Bay.
2004-413	ALT	Tim Tanton	Possible alterations by the Town of Sidney to arch. site DdRu-004 from trench excavations for the installation of underground wiring from 9334 Lochside Drive N. along Lochside to Ocean Avenue, Sidney, as well as excavation of two short trenches perpendicular to the main trench to facilitate drainage from Hydro stations.
2004-414	ALT	Wes Wiebe	Alterations by MoT to arch. site FeRm-11 during erosion repair and road construction along the Quesnel Hydraulic Rd near the confluence of the Quesnel River and Twyler Creek.
2004-415	ALT	Tom Olafson	Cutting, felling, yarding, moving, milling, dating and other alterations by Fraser Lake Sawmills to 517 cambium-stripped CMTs comprising part of arch. site FjSI-001 (in CP 419, Block 44), 104 cambium-stripped CMTs comprising part of site FjSm-002, 7 cambium-stripped CMTs at site FjSm-003, and 212 cambium-stripped CMTs comprising part of site FjSm-004 (all in CP 416, Block 24), in the vicinity of Uduk Lake, Nadina FD.
2004-416	INS	Mike Rousseau	Arch. inv. and impact assessment within Part of the SW 1/4 of Sec 27, Tp 22, Rge 11, W6M, KDYD, located in Scotch Creek on the N. side of Shuswap Lake, S. of the Captain's Village Marina, for a proposed residential subdivision development, including activities such as house, garage, driveway and access road construction, landscaping, and installation of water, power and sewage systems.
2004-417	INS	Morley Eldridge	Arch. inv. and impact assessment of the EnCana Corporation's Sundown development area, encompassing NTS Mapsheets 94 P/7 and 94 P/8, NE British Columbia.
2004-418	ALT	Randy Byford	Alterations to arch. site DkPt-T04 by Galloway Lumber Company Ltd during proposed road upgrade construction activities within FL A19042, R12478 Rd, Secs 21-3 and 21-4, located appx. 1 to 1.25 km N. of the Galbraith Creek - Bull River confluence in Landscape Unit 28, Rocky Mountain FD.
2004-419	ALT	Tim Clermont	Alterations to arch. site DhSb-018, located at the mouth of Craig Creek within Craig Bay near Parksville, with the Nature Trust's installation of a small-diameter sewer pipe running appx. 60 metres from Lot 8, PL10012, Nanoose Land District, at 1520 Terrien Rd, to an existing sewer main within the intertidal zone.
2004-420	INS	Chris Engisch	AIA of forestry dev. proposed by Western Forest Products Incorporated for TFL 25, Block 5, and other timber harvesting operations in areas E. of Don Peninsula (Tom Bay Operations) and the Ingram camps located on Spiller Inlet and Ingram Lake, N. Island-Central Coast FD.

2004-421	ALT	Raymond Bartram	Alterations to arch. sites DhSI-142, DhSI-143 and DhSI-144 from forestry operations proposed by Iisaak Forest Resources Ltd. for Block 213451, TFL 57, located within the Cypress Bay area, Clayquot Sound, S. Island FD.
2004-422	INS	Peter Merchant	AIA of Regional Power Inc.'s proposed Bear Creek hydroelectric project along Bear Creek N. of the Clowhom Reservoir, located NE of the community of Sechelt, on the Sunshine Coast of SW.
2004-423	INS	Clinton Coates	Arch. inv. and impact assessment for Land and Water within Lot 36, DL 805, ODYD, Plan 761, located N. of W. bank adjacent to the NW corner of Tsinstikeptum IR #9, about 1 km S. of Shannon Lake, for a proposed residential subdivision development which includes activities such as house and road construction, landscaping, and installation of water, power and sewage systems.
2004-424	INS	John Dewhirst	AIA of the Channel Ridge property, including select areas of the Channel Ridge Village Development (CD1 & CD2); D.L. 6 Except Parcel A (DD 100250-1) and VIP68921 (24.80 ha); Sec 11, RG2 W, Except 44541, 48062, VIP52090, VIP59518, VIP64175, VIP66032 (24.93 ha); Sec 12, RG2 W, Except VIP52090, VIP59518, VIP61967, W. of Lot 8, Plan VIP73646, VIP66032, VIP73646, VIP76155, W. of Lot 8, Plan VIP61967 (24.16 ha); Sec 13, RG2 W, Except PCL A (DD100520-1), VIP61967, VIP68921, VIP73646 (21.51 ha); Lot 17, Sec 9, RG2&3 W, Plan 44541, Except 45544, 46963, 47698, 48063, VIP52090, VIP59522, Adjacent to Lot 18, Plan 48063 (25.09 ha); Lot 5, SCE 10, 11, 12, RG1, Plan 407476, Except 45544, 48063, 50011, VIP59518, VIP64175, VIP76155 (11.15 ha); Lot B, Secs 12&13, RG3 W, Plan 44304 (105.30); Remainder Part Sec 12 (3.18 ha); Lot 2, D.L. 3, 4, 5 Plan 29161, Except VIP59523, VIP68921 (78 ha); and the area of site DfRv-115 near the interSec of Broadwell Rd and Canvasback Place, Saltspring Island.
2004-425	INS	Barry Wood	AIA of the proposed Plumbob Creek Campground/Marina, located within D.L. 315, Kootenay Land District, on the W. side of the Kootenay River/Koocanusa Reservoir at the Plumbob Creek confluence in the E. Kootenay region of SE.
2004-426	INS	Dan Weinberger	AIA of First Pro Shopping Centres proposed shopping center at the N. side of Highway 20 across from the junction of the Dog Creek Rd and Highway 20 located S. of the main town site of Williams Lake.
2004-427	INS	Barbara Kulle	AIA for oil and gas dev. proposed by Progress Energy within the ATT of the Halfway FN in NE, including overlapping areas with other FNs, within NTS mapsheets: 93 J/10, 11, & 13 - 16; 93 N/1 - 3, 6 - 8, & 9 - 16; 93 O/1 - 16; 93 P/4 - 6, & 11 - 14; 94 A/2 - 7, & 11 - 13; 94 B/1 - 16; 94 C/1 - 16; 94 D/1, 8 - 10, 15 & 16; 94 E/1, 2, & 7 - 9; 94 F/1 - 12, 15 & 16; 94 G/1 - 8, & 10 - 15, and; 94 H/4.
2004-428	INS	Gail Wada	AIA of forestry dev. proposed by Sts'ailes Natural Resources Inc. within Cut Blocks 1, 2 and 3 located on Echo Island at the S. end of Harrison Lake within the Chilliwack FD.
2004-429	ALT	Shawn McLennan	Alterations to arch. site DgSi-019 from forestry operations proposed by Weyerhaeuser Company Limited, W. Island Timberlands, for Private Land MFU 19, Harvest Area 032208, located SW of Snowden Island in Toquart Bay, S. Island FD.
2004-430	ALT	David Smith	Alterations to portions of arch. site DhSb-2 arising from demolition and redevelopment of the Island Hall Resort property located near the junction of Highway 19A and McMillan Street in Parksville (development covers two lots: Lot 1, DL 89, Nanoose District and Part Formerly of the Bed of the Strait of Georgia, Plan VIP76577; and Remainder Lot A, DL 89, Nanoose District, Plan 26623 Except Plan 49549).
2004-431	ALT	private property owner	Alterations to arch. site DjRw-001 that may result from the construction of a residence and installation of ancillary services on Marmot Rd on the E. side of Porpoise Bay, appx. 3 km N. of the community of Sechelt, on the Sunshine Coast of SW.
2004-432	INS	Peter Merchant	AIA of a proposed residential development at 4610 and 4612 Sinclair Bay Rd on the N. shore of Pender Harbour within Duncan Cove, on the Sunshine Coast of S. W.
2004-433	ALT	Brent Persello	Alterations to site EiQg-001 with the construction of a Joint Use Vehicle Inspection Station located adjacent to the Trans Canada Highway near the Town of Donald, NW of Golden, District of W. Kootenay.
2004-434	INS	David Hall	AIA of Canadian Green Power Ltd.'s proposed 10 MW run-of-river microhydroelectric project along the lower reaches of the Clowhom River and the Northern shoreline of the Clowhom reservoir, located NE of the community of Sechelt, on the Sunshine Coast of SW.
2004-435	INS	Chris Burk	AIA of the MoT's proposed Pasayten River gravel pit development, located appx. 12 km S. of Similkameen Falls near Princeton in S. Central.
2004-436	INS	Amanda Marshall	AIA of the Regional District of Kitimat-Stikine's proposed Hazelton Landfill Phase 2, located immediately S. of the existing Phase 1 Landfill, about three km E. of the District of New Hazelton in W.-central.
2004-437	INS	Matthew Begg	AIA of the Regional District of Kitimat-Stikine's proposed Forceman Ridge Landfill, located at Onion Lake, appx. 28 km S. of Terrace in W.-central.
2004-438	ALT	Norm Parry	Alterations to arch. sites GcTd-016, GcTd-017 and GcTd-018 from forestry development activities to be conducted by Timber Sales (Skeena Business Area) for Timber Sale License A43506, located on the height of land between Ena Lake and Lakelse Lake, 43 km S. of Terrace within the Thunderbird Development Area, Kalum FD.

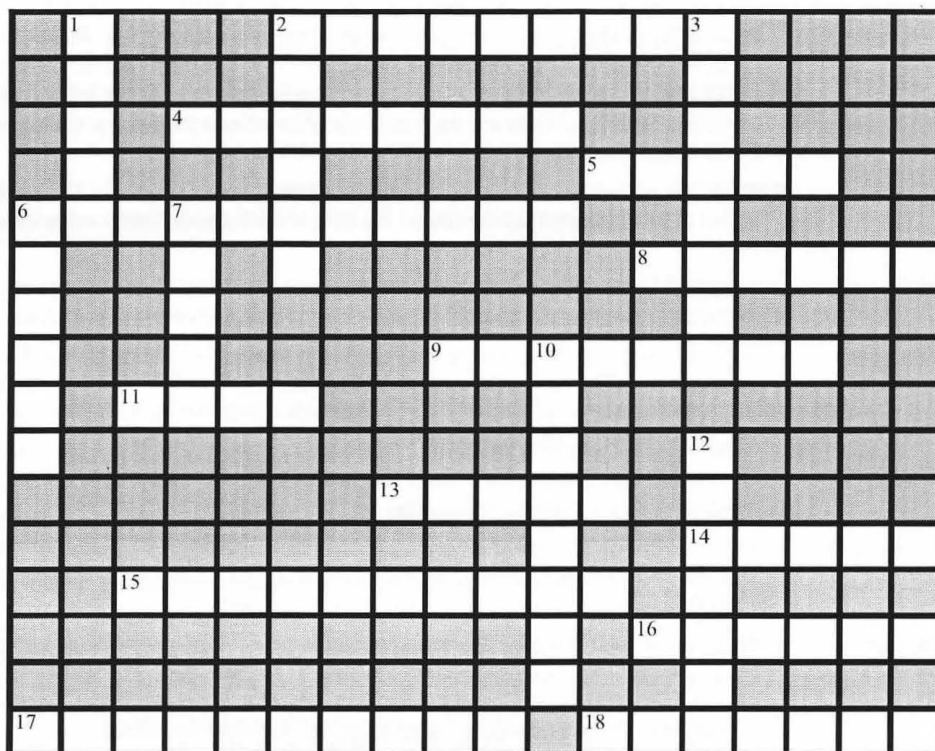
2004-439 INS Peter Merchant

AIA of a proposed residential development of Lot 2, Block 1, D.L. 1310, Plan 7839 NWD, located at or near arch. site DiRw-011, E. of Wakefield Creek, in the vicinity of the junction of Highway 101 and Mason Rd, W. of the community of Sechelt on the Sunshine Coast of S. W.

2004-440 ALT private property owner

Alterations to arch. site DkSf 10 from proposed construction of garage, to be attached to existing residence on Carthew Street, Comox

## Northwest Coast Archaeology



### ACROSS

2. Site of 2005 CAA's
4. Culturally \_\_\_\_\_ tree
5. Fishing structures
6. Study of ancient humans
8. Staple foodsource
9. Skillfully woven containers
11. Face covering for dances
13. Reid, "Wild," ...
14. Mischievous bird
15. Rock carving or Egyptian marking for oil?
16. Father of BC archaeology
17. Tall carving
18. Illustrator Hilary \_\_\_\_\_

### DOWN

1. Sacred tree
2. Refuse, primarily shells
3. Man-made item
6. Animal material, often carved
7. Island Nation
10. Decimated First Nations, 1800s
12. Site in South Vancouver

© Clockwatchers, Inc. 2003

Composed by Sarah Ladd



## Guidelines for Contributors to:

# **MIDDEN**

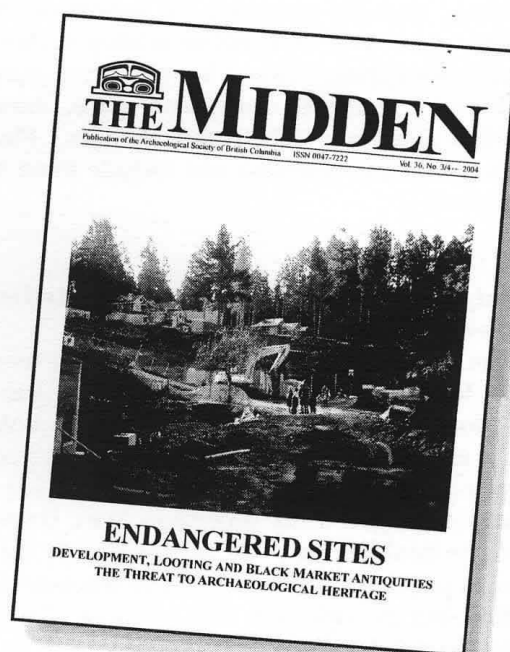
Publication of the Archaeological Society of British Columbia

ISSN 0047-7222

Vol. 37, No. 1 — 2005

*The Midden* is a quarterly publication of the Archaeological Society of British Columbia, based in Vancouver, with local branches in Victoria and Nanaimo. Initially a small newsletter, the publication is now in its 37th year of operation. It has a broad subscriber base and is archived by libraries throughout the country and abroad. The quarterly is produced by a volunteer staff of editors. We welcome a variety of submissions on subjects germane to BC archaeology, and the wider Northwest Coast and Interior, including articles, book reviews, news items, announcements, field notes, and so on.

Below are guidelines that simply provide some orientation regarding submission length, style, and digital formats.



### TOPICS

#### *Northwest Coast and Interior archaeology within the province and adjacent areas*

We will consider all submissions or proposals for news, feature articles and book reviews related to Northwest Coast and Interior archaeology. These can include discussions of excavations, analyses of artifacts and assemblages, and even theoretical pieces. We also invite articles concerning the endangerment of sites and issues related to archaeological preservation, First Nations' concerns, and related issues in cultural anthropology, art, history, and museum studies that have relevance to our audience. Short news pieces highlighting work in other regions are also welcomed.

#### *Book Reviews*

Book reviews are considered for all books on these topics mentioned above, however, these are not restricted to the immediate region. Methodological or theoretical books intended for the wider discipline are also considered, with preference for those that have applicability for local archaeology. It is best to propose a book review to an editor to ensure that the book has not been assigned to another writer. Often, *The Midden* receives review copies of relevant books and these can be provided to any reviewer assigned to a book; in many cases, an editor also can request a copy of a proposed book for review for you from the publisher. A list of available books and publications possibly available for review are included in the "Recent Publications" section of *The Midden*, which runs intermittently.

## SUBMISSIONS

Feature articles (1,000 to 4,000 words), news pieces (ca. 750), and book reviews (ca. 1,000)

Our contribution guidelines are pretty straightforward, and past issues of *The Midden* can be used as a guide. Article length is flexible, ranging anywhere from approximately 1,000 to 4,000 words. Book reviews typically are 1,000 words. Submissions preferably should be sent electronically to the appropriate editor in the file formats discussed below. Material may also be submitted on disk with an accompanying hard copy.

## STYLE

*Broad audience, Canadian English, SAA style guide*

*The Midden* follows the Society for American Archaeology (SAA) style guide, particularly for any bibliographies, and uses the Canadian Oxford Dictionary. Because our audience is so varied (professional archaeologists, students, professors, and lay persons), it's important that material is written in a style that will be readily understood by all readers with technical jargon kept to a minimum. Text may be edited for grammar, clarity, and space. Authors will be consulted about any substantive changes. Please provide references for any citations, and include these in your total word count.

## TEXT FORMATS

*Digital files preferred in Rich-Text Format (.rtf) or as a Word document (.doc)*

The preferred format for your text file submission is a simple Rich-Text File format (.rtf), a near plain text format that allows for simple style codes (italics, bold, etc.); this style is readable and utilized by nearly all word processors (usually through "Save As..."), plus it avoids error-prone codings of larger word processors (i.e., Word). If style-coding is minimal, you can submit text in the body of an email as plain text. Microsoft Word documents (.doc) also are fine, but provide only text in those files and provide tables, figures, or other graphics separately.

## GRAPHIC FORMATS

*Attach graphics separately (.pdf, .jpg, .gif, .tif) in large sizes suitable for printing at clear resolution*

Please do include a few graphics with your article (e.g., photographs, maps, illustrations, tables, or graphs). Graphics preferably should be submitted in a digital format (.pdf, .jpg, .gif, or .tif) but certainly can be provided as original hard copies. Please submit all digital images as individual files at a large size suitable for print quality; generally, full-screen size is sufficient as a rule. Please do **not** include images within a Microsoft Word document as images are difficult to extract to sufficient quality of resolution for printing. Also, please remember that *The Midden* is printed in black and white, or grayscale, so if using colour for your figures, consider that the differences in line colours may not be so distinctive once converted to grayscale. Regarding photographs, a short caption and photo credit must be provided for each one. Depending on space constraints, not all graphics may be included or may be printed in a small size. Any original graphics will be returned.

## CAPTIONS

*Provide captions for photographs and figures; acknowledge any permissions*

Please provide captions for any photographs or figures, perhaps as a listing at the end of your article. Also, note reference links (e.g., Figure 1) within the text to guide the placement of images and figures during the layout process. Acknowledgements for permissions towards the use of particular images may either be made in the text, or in a caption, as appropriate. It is the responsibility of the author to secure permission for publication of any text and graphics.

## BYLINE

*Include a short bio at the end of your submission*

Provide a short author biography, ranging from two to three sentences, to run at the end of the article. If there is more than one author, provide a separate byline for each author. Refer to past *Midden* biographies for a style guide; typically, people mention their degrees, professions, institutional affiliations, and/or their scholarly interests.

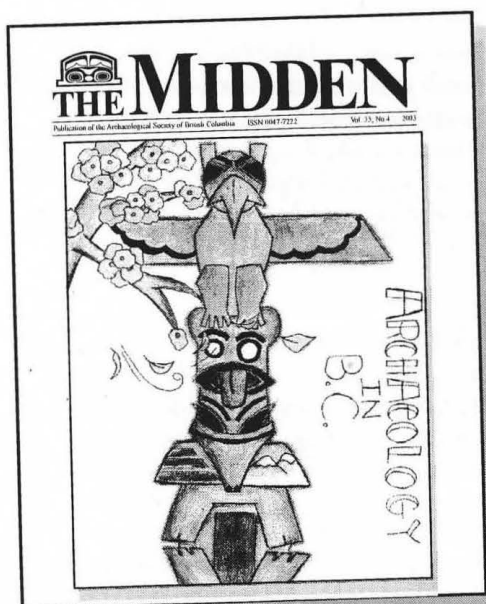
## COMPLIMENTARY COPIES

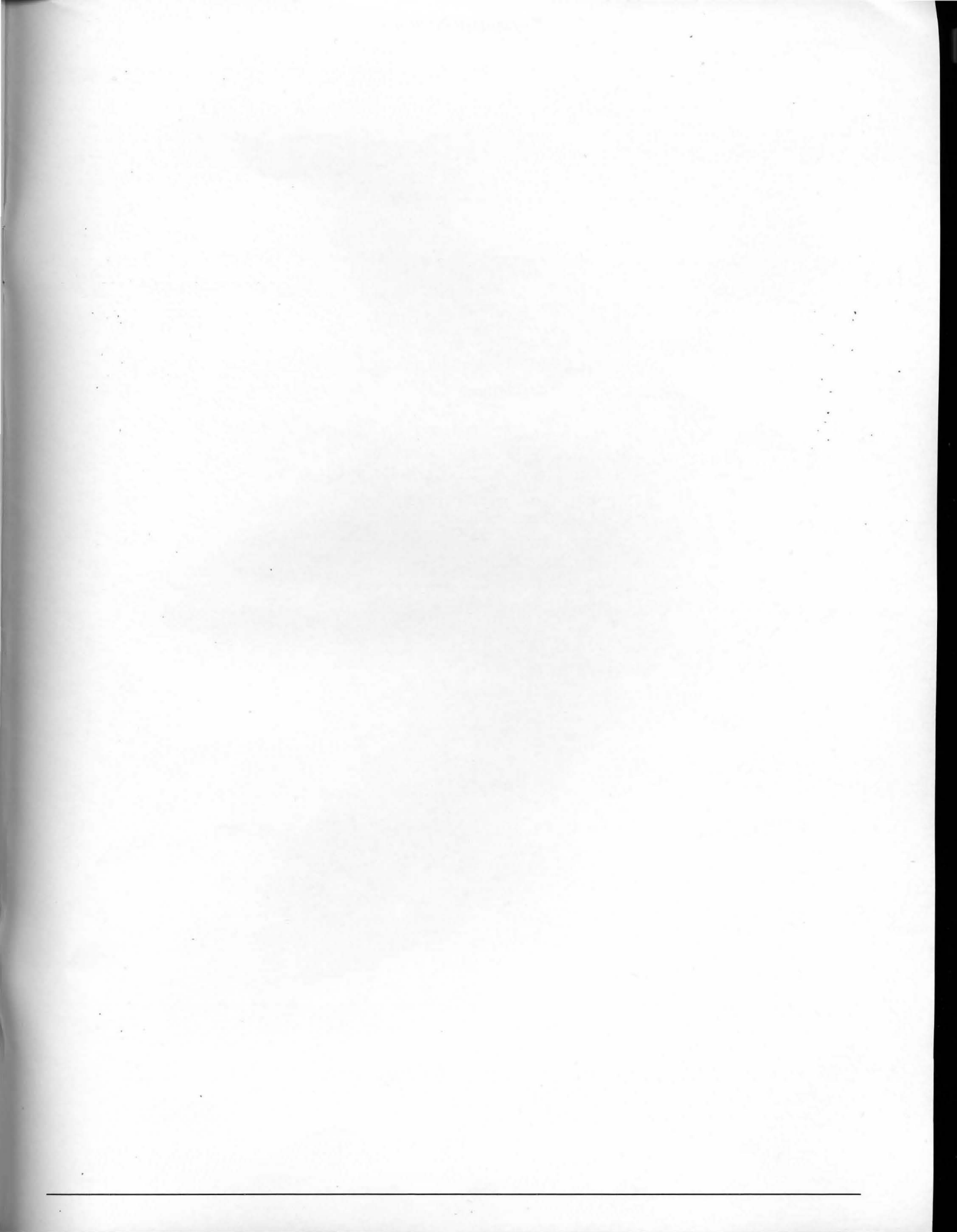
*Writers receive complimentary copies of The Midden containing their articles or reviews*

Authors of feature articles receive two complimentary copies of the issue containing their article. Book reviewers receive one complimentary copy of the issue containing their review. News article contributors may receive complimentary copies if their submission is 1000 words. Additional issues may be purchased at the single issue rate (\$5).

*Please send your submissions or ideas for contributions to one of the editors, such as Bill Angelbeck (angelbec@interchange.ubc.ca) or Patricia Ormerod (cbarc@interchange.ubc.ca).*

<http://asbc.bc.ca/midden.html>







---

## CONFERENCES & EVENTS

### CHACMOOL CONFERENCE 2005

Rozca Center, Calgary, November 10-13.

*Theme:* Tools of the Trade: Methods, Techniques, and Innovative Approaches

*Info:* <http://www.arky.ucalgary.ca/arkyl>

### AMERICAN ANTHROPOLOGICAL ASSOCIATION, 104TH ANNUAL MEETING

Washington, D.C., November 30-December 4.

*Theme:* Bringing the Past into the Present

*Info:* [http://www.aaanet.org/press/an/0501Call\\_for\\_Papers.htm](http://www.aaanet.org/press/an/0501Call_for_Papers.htm)

*Inquiries:* Alisse Waterston ([awaterston@aol.com](mailto:awaterston@aol.com))

### 16TH ANNUAL APALA CONFERENCE

APALA STUDENT SOCIETY, DEPARTMENT OF ARCHAEOLOGY, U. OF SASKATCHEWAN

Saskatoon, Saskatchewan, January 27-29, 2006

*Info:* [http://duke.usask.ca/~ss\\_apala](http://duke.usask.ca/~ss_apala)

*Abstract Submissions:* [uos\\_apala@yahoo.ca](mailto:uos_apala@yahoo.ca) (Deadline: December 15)

### NORTHWEST ANTHROPOLOGICAL CONFERENCE

Seattle, Washington, March 29-April 1, 2006.

*Info:* [http://www.washington.edu/burkemuseum/NWAC/NWAC\\_Index.htm](http://www.washington.edu/burkemuseum/NWAC/NWAC_Index.htm)

### SOCIETY FOR AMERICAN ARCHAEOLOGY, 71ST ANNUAL MEETING

San Juan, Puerto Rico, April 26-30, 2006

*Info:* <http://www.saa.org/>

*Inquiries:* [meetings@saa.org](mailto:meetings@saa.org)



**THE MIDDEN**

P.O. Box 520  
Bentall Station  
Vancouver BC Canada

